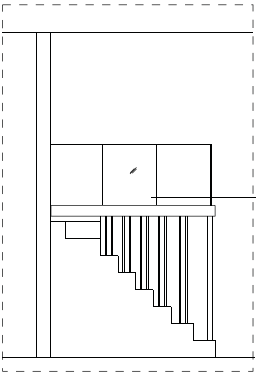
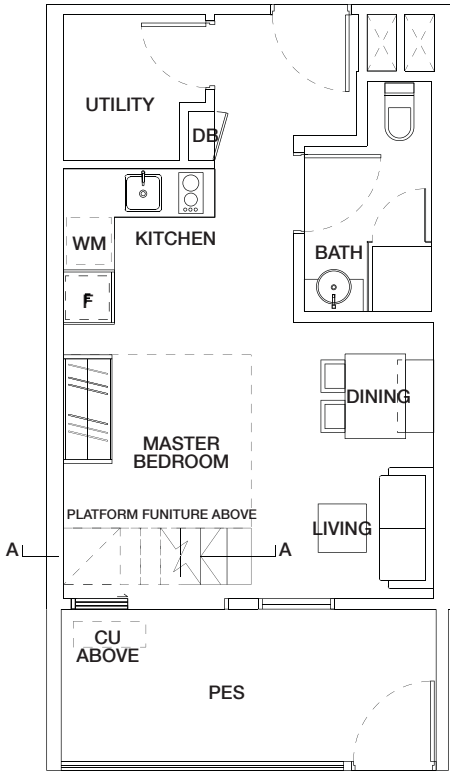


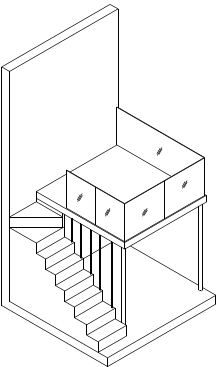
TYPE A2-P

1 bdrm
44 sq m

#01-02



SECTION A-A



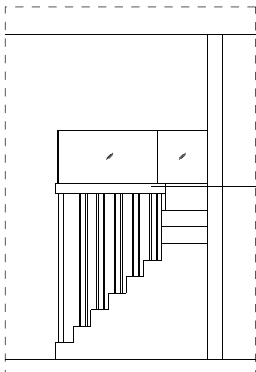
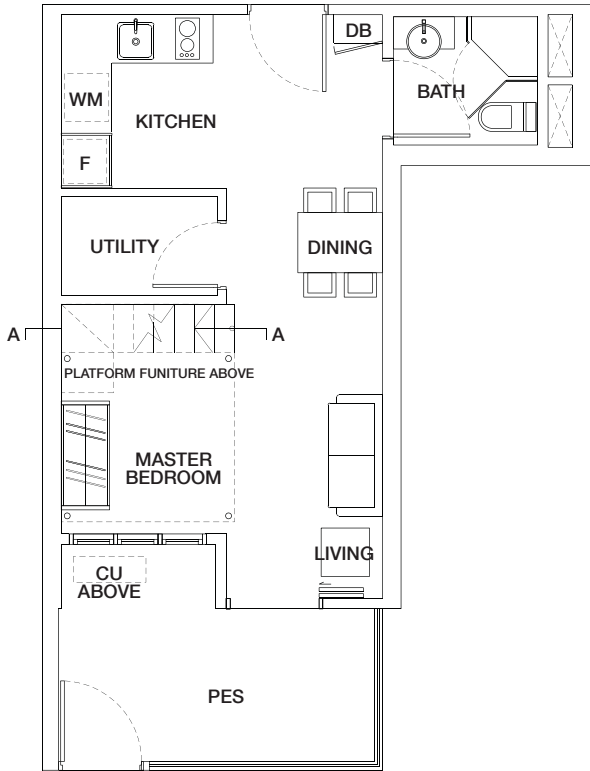
ISOMETRIC VIEW

Note: Unit area includes a/c ledge & / or terrace & / or balcony & / or PES where applicable.
All plans are subject to amendments as approved by the relevant authorities.

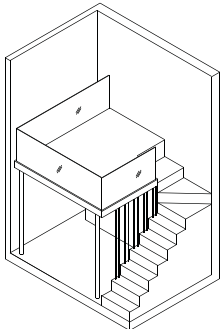
TYPE A3-P

1 bdrm
43 sq m

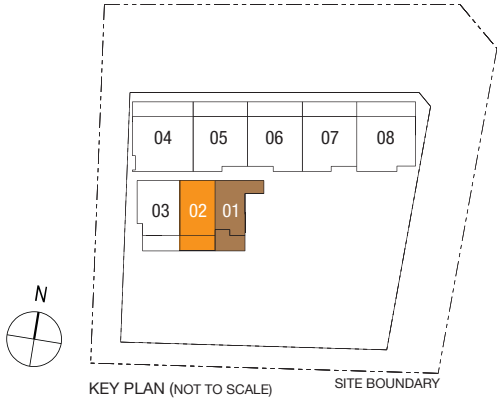
#01-01



SECTION A-A



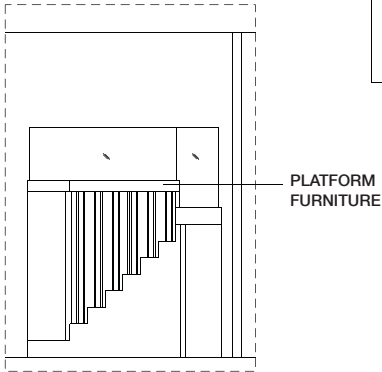
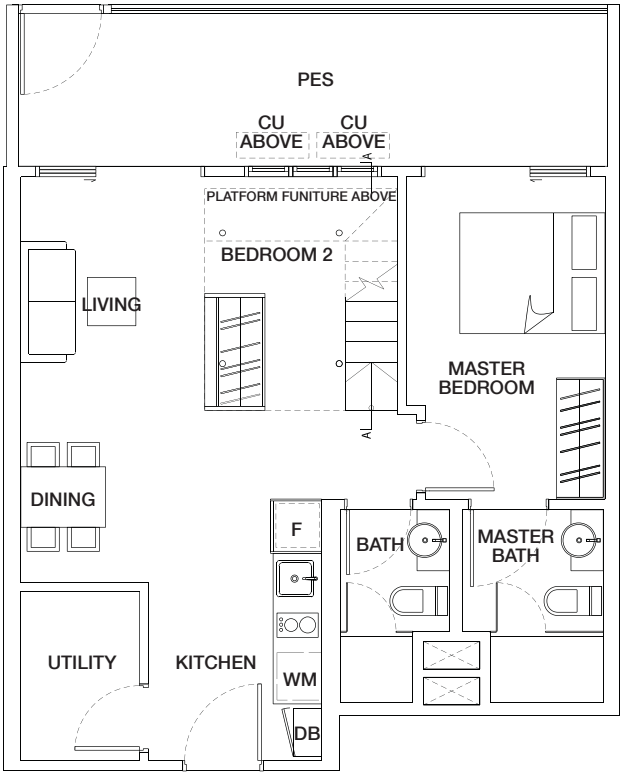
ISOMETRIC VIEW



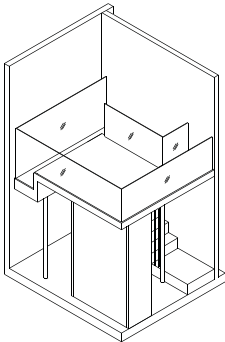
TYPE B1(L)-P

2 bdrm
67 sq m

#01-05
#01-07



SECTION A-A



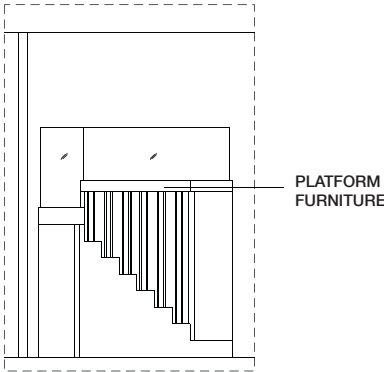
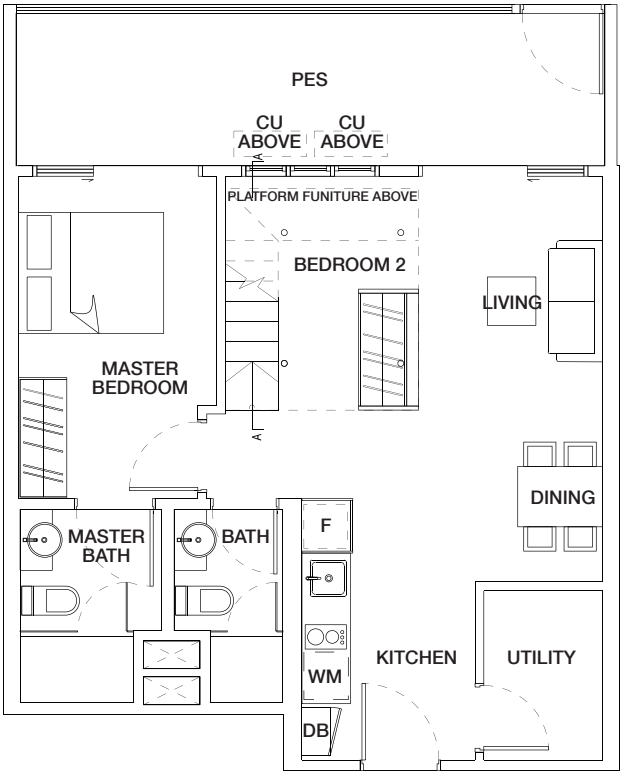
ISOMETRIC VIEW

Note: Unit area includes a/c ledge & / or terrace & / or balcony & / or PES where applicable.
All plans are subject to amendments as approved by the relevant authorities.

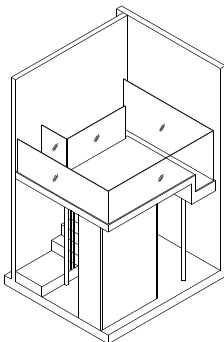
TYPE B1(R)-P

2 bdrm
67 sq m

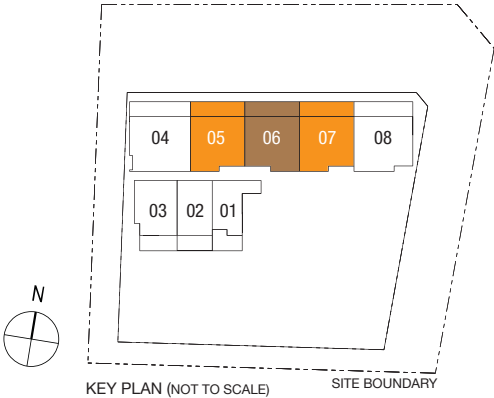
#01-06



SECTION A-A



ISOMETRIC VIEW



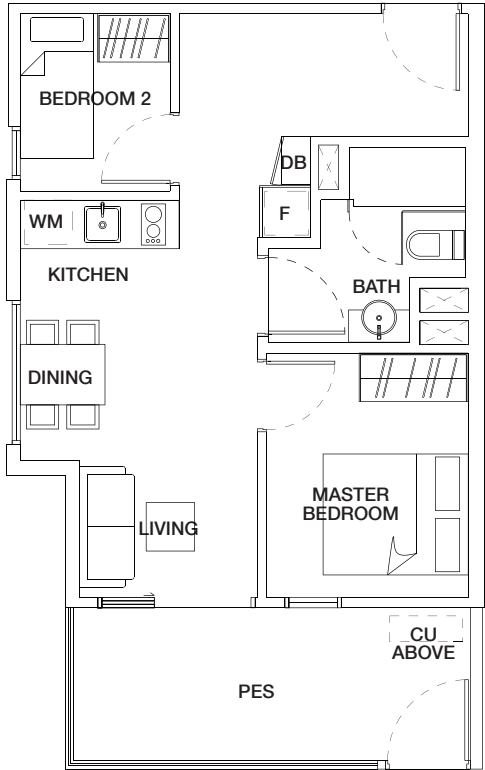
KEY PLAN (NOT TO SCALE)

SITE BOUNDARY

TYPE **B4-P**

2 bdrm
50 sq m

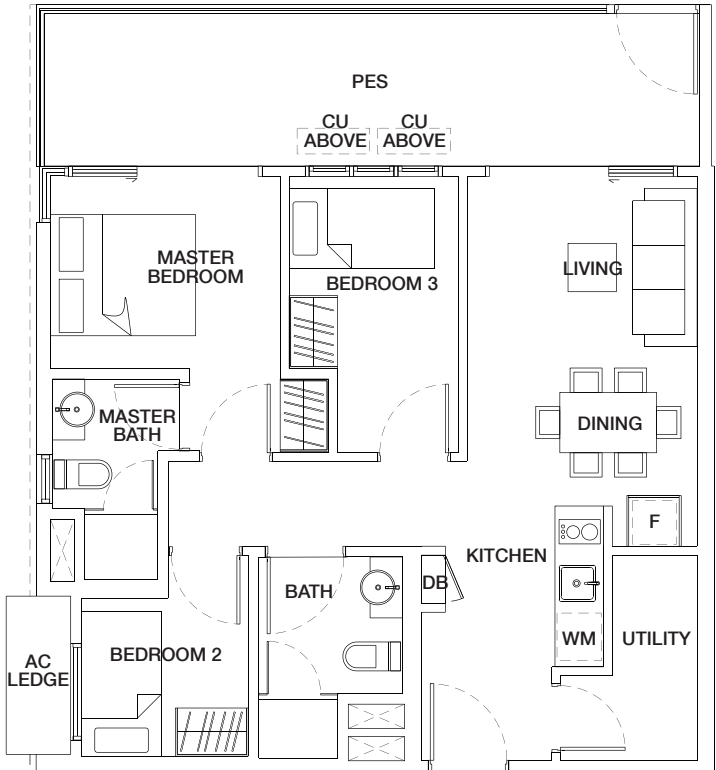
#01-03



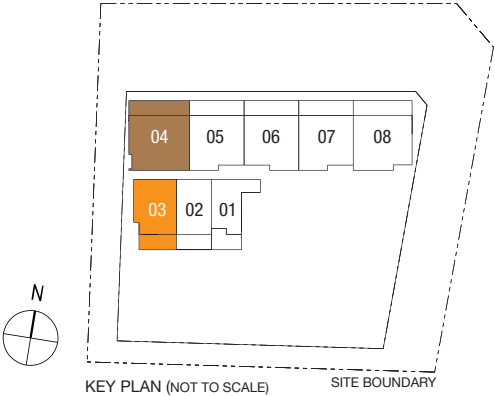
TYPE **C2-P**

3 bdrm
77 sq m

#01-04



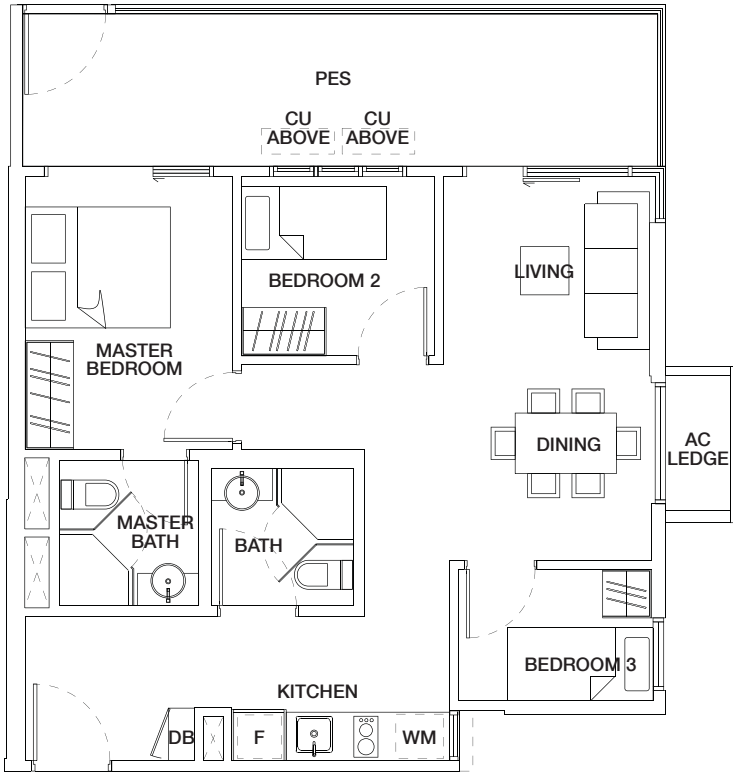
Note: Unit area includes a/c ledge & / or terrace & / or balcony & / or PES where applicable.
All plans are subject to amendments as approved by the relevant authorities.



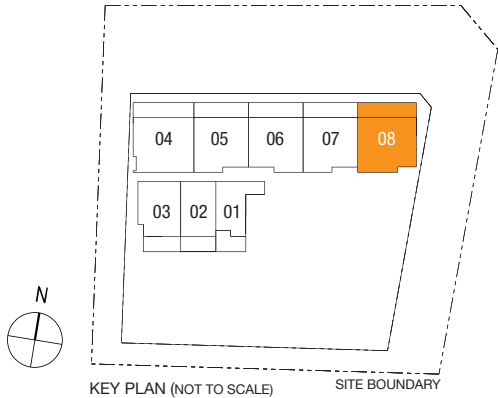
TYPE C3-P

3 bdrm
73 sq m

#01-08



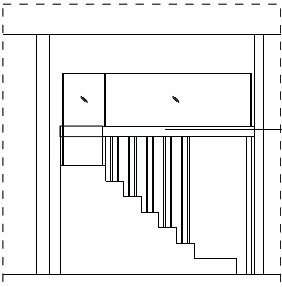
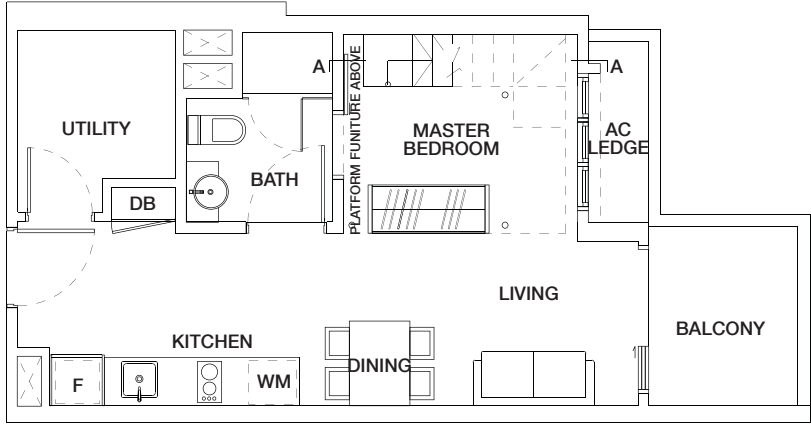
Note: Unit area includes a/c ledge & / or terrace & / or balcony & / or PES where applicable.
All plans are subject to amendments as approved by the relevant authorities.



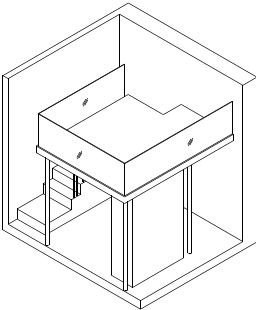
TYPE A1

1 bdrm
42 sq m

#02-11
#03-11



SECTION A-A



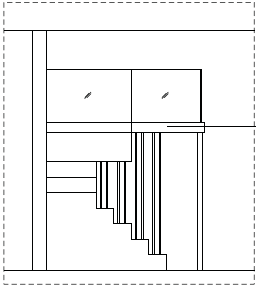
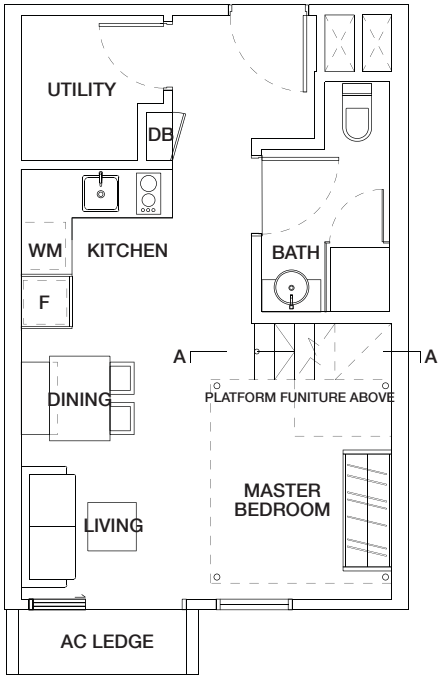
ISOMETRIC VIEW

Note: Unit area includes a/c ledge & / or terrace & / or balcony & / or PES where applicable.
All plans are subject to amendments as approved by the relevant authorities.

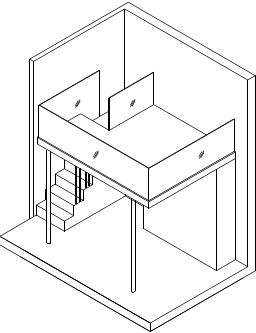
TYPE A2

1 bdrm
37 sq m

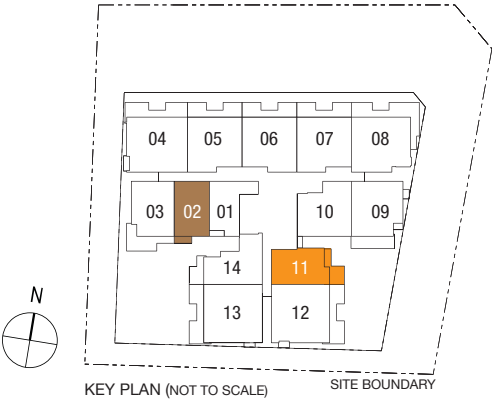
#02-02
#03-02



SECTION A-A



ISOMETRIC VIEW

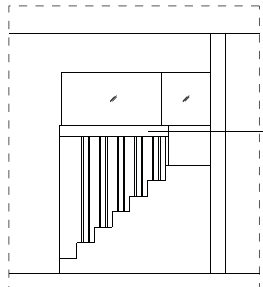
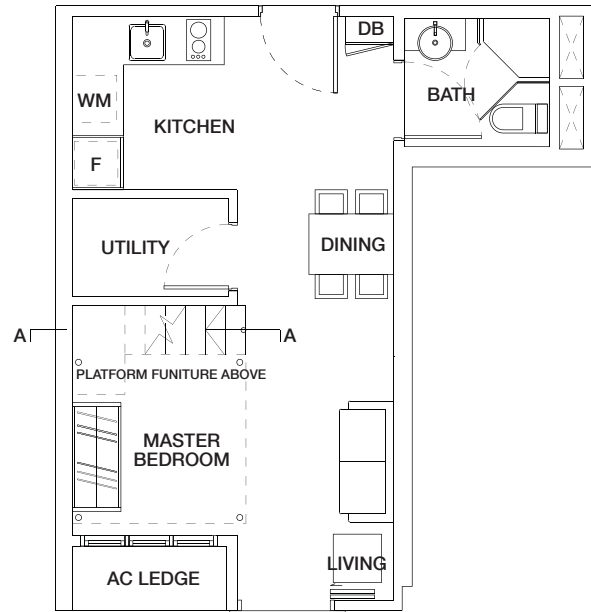


KEY PLAN (NOT TO SCALE) SITE BOUNDARY

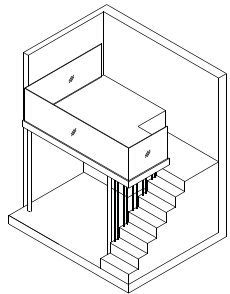
TYPE A3

1 bdrm
35 sq m

#02-01
#03-01



SECTION A-A



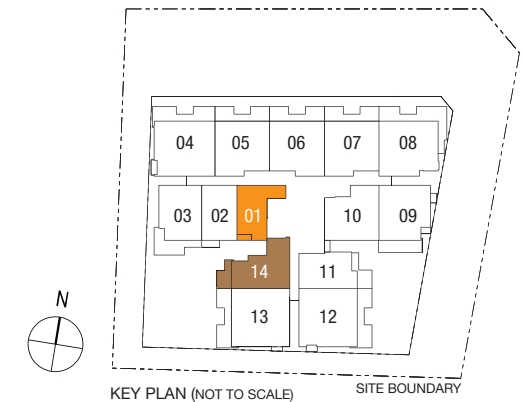
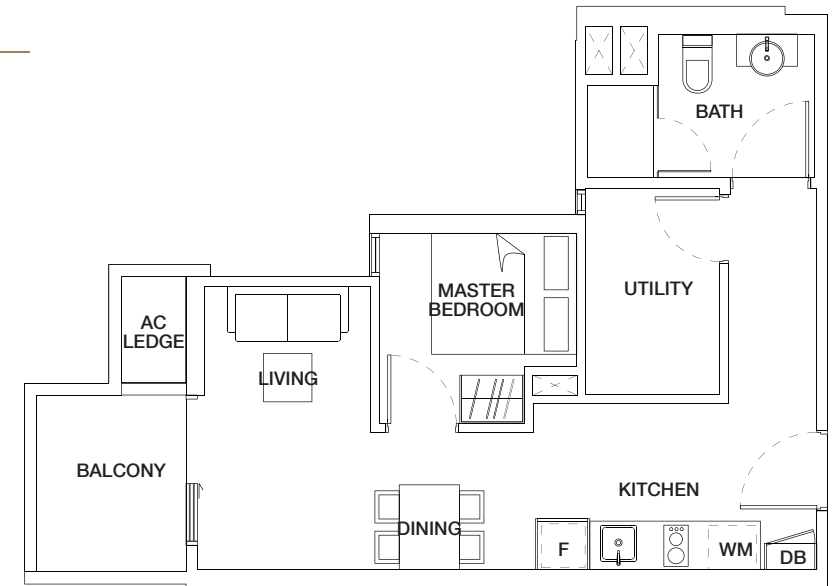
ISOMETRIC VIEW

Note: Unit area includes a/c ledge & / or terrace & / or balcony & / or PES where applicable.
All plans are subject to amendments as approved by the relevant authorities.

TYPE A4

1 bdrm
46 sq m

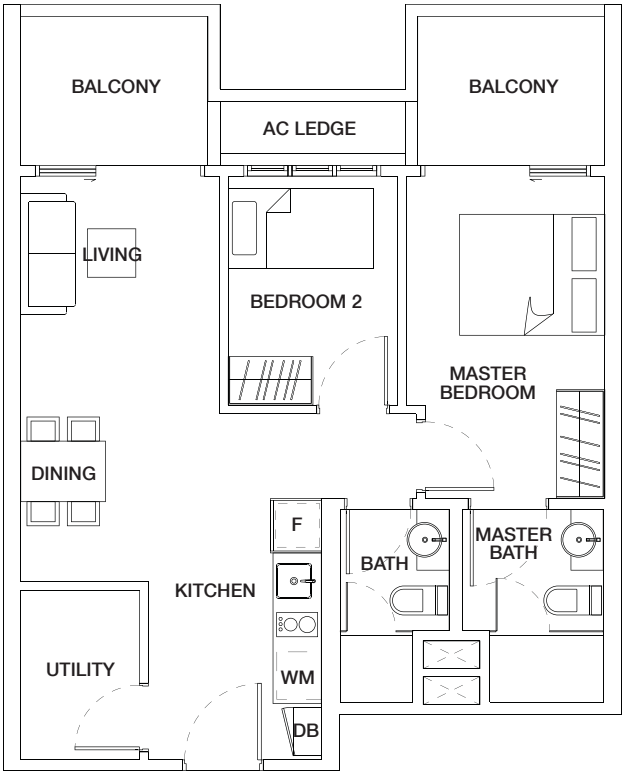
#02-14
#03-14



TYPE **B1(L)**

2 bdrm
64 sq m

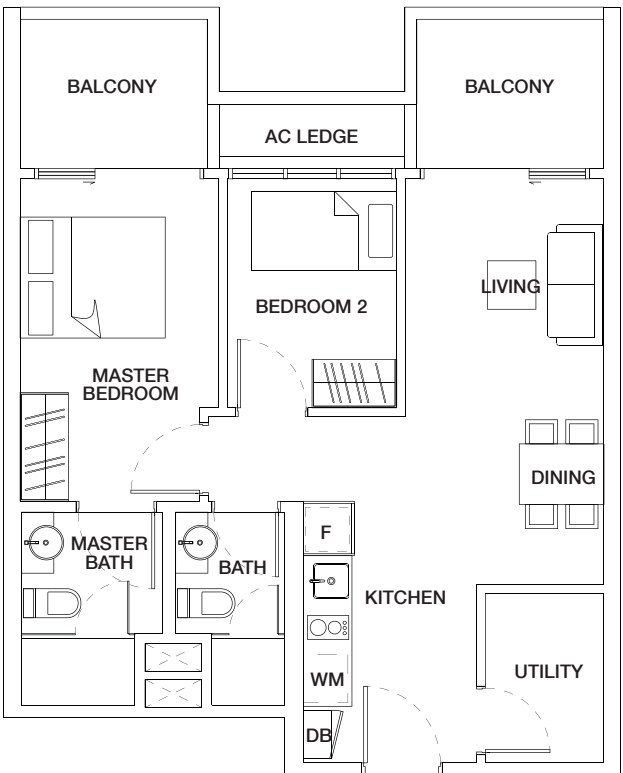
#02-05
#02-07
#03-05
#03-07



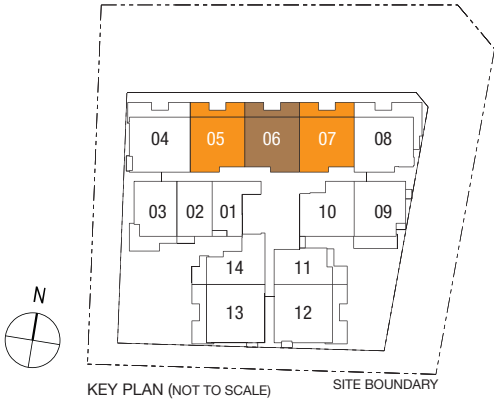
TYPE **B1(R)**

2 bdrm
64 sq m

#02-06
#03-06



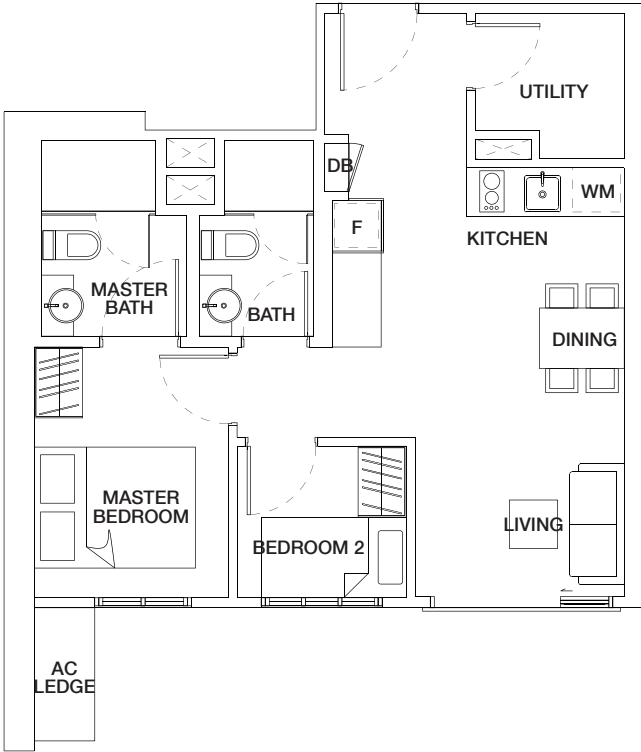
Note: Unit area includes a/c ledge & / or terrace & / or balcony & / or PES where applicable.
All plans are subject to amendments as approved by the relevant authorities.



TYPE B2

2 bdrm
51 sq m

#02-10
#03-10



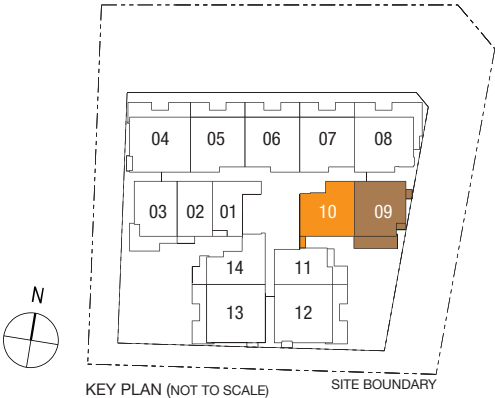
TYPE B3

2 bdrm
59 sq m

#02-09
#03-09



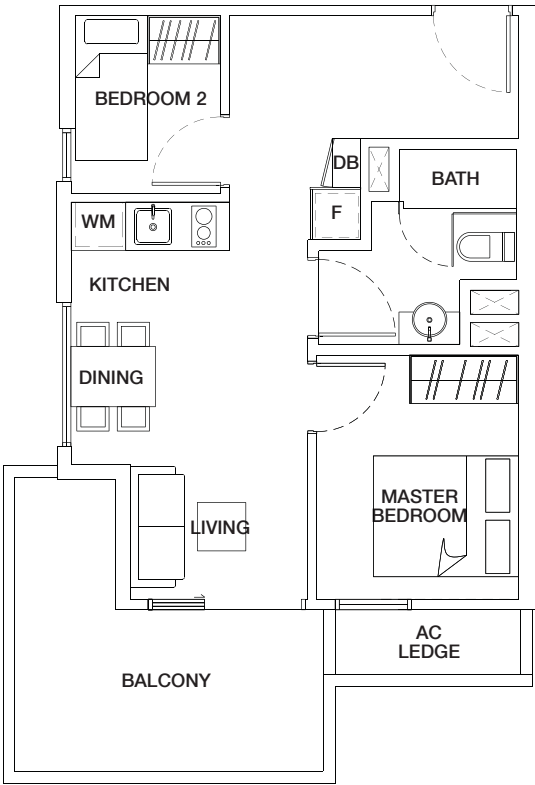
Note: Unit area includes a/c ledge &/ or terrace &/ or balcony &/ or PES where applicable.
All plans are subject to amendments as approved by the relevant authorities.



TYPE **B4**

2 bdrm
53 sq m

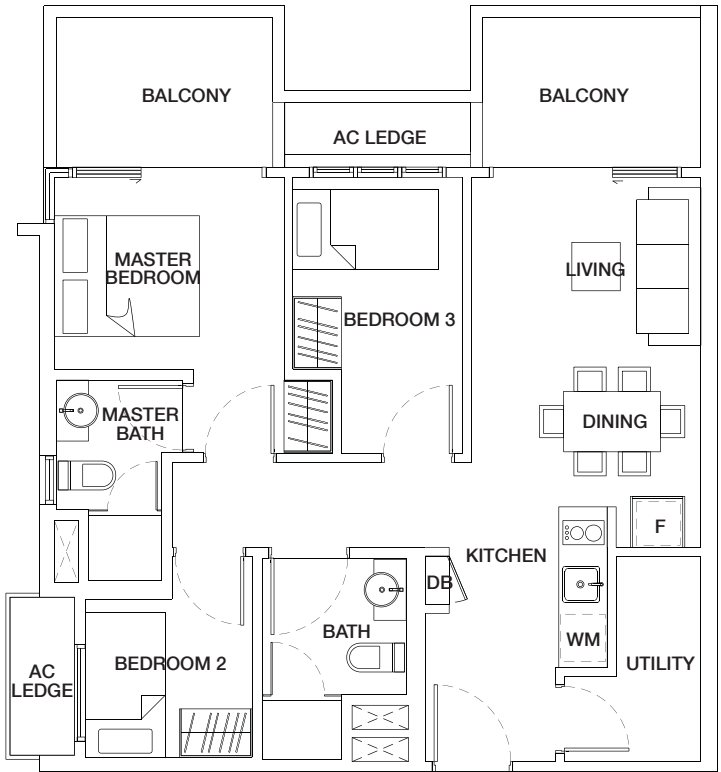
#02-03
#03-03



TYPE **C2**

3 bdrm
74 sq m

#02-04
#03-04



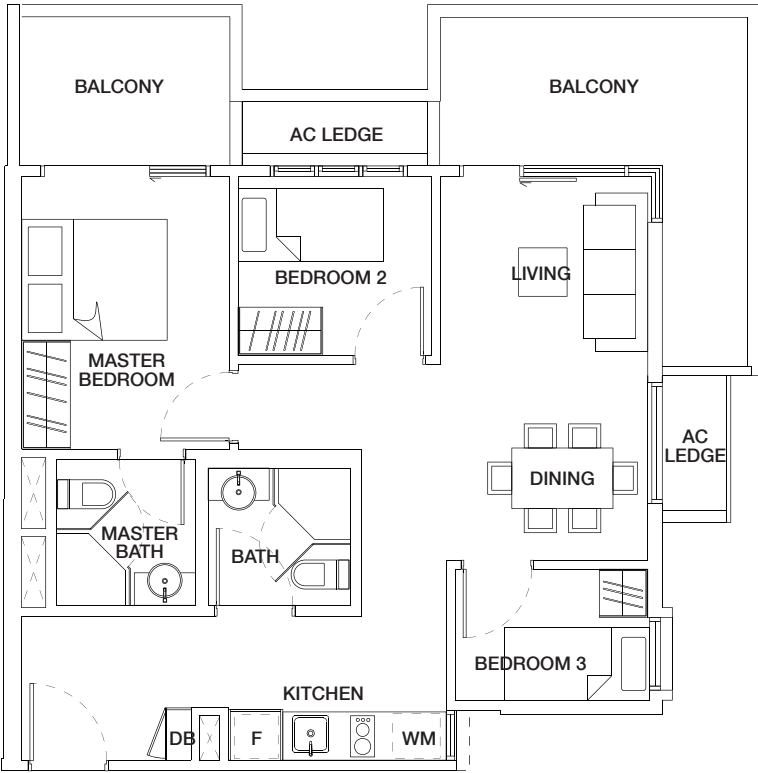
Note: Unit area includes a/c ledge & / or terrace & / or balcony & / or PES where applicable.
All plans are subject to amendments as approved by the relevant authorities.



TYPE C3

3 bdrm
76 sq m

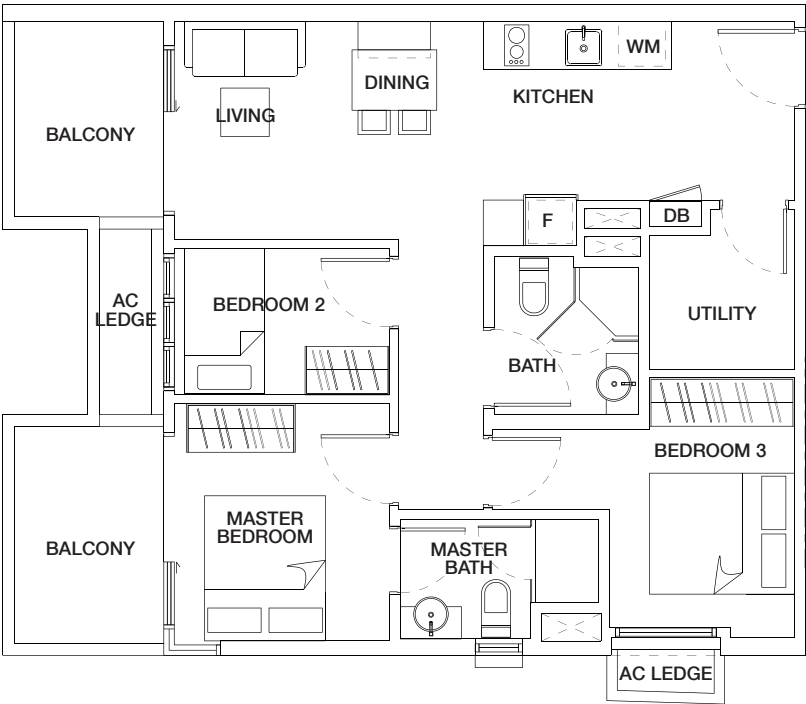
#02-08
#03-08



TYPE C1(L)

3 bdrm
74 sq m

#02-13
#03-13



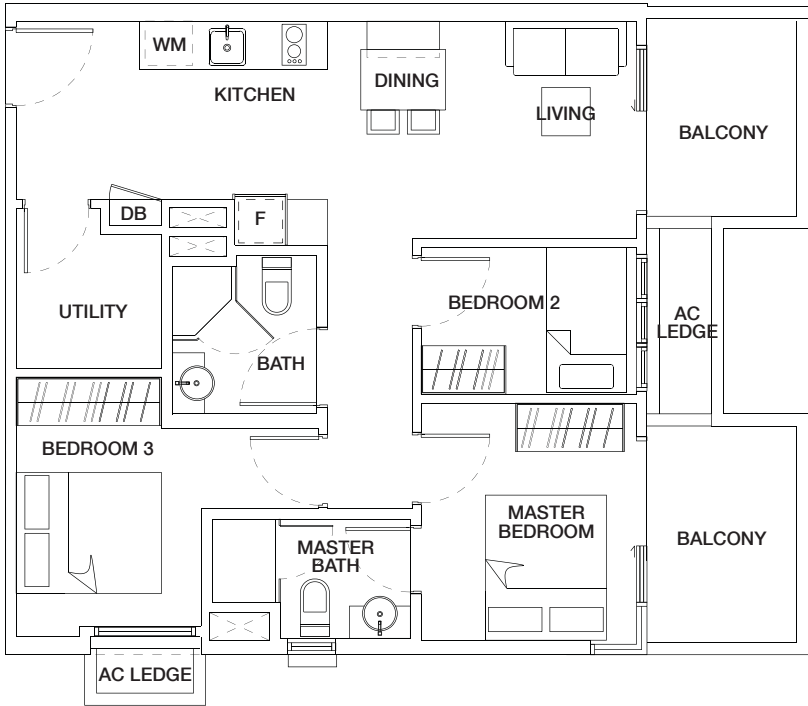
Note: Unit area includes a/c ledge & / or terrace & / or balcony & / or PES where applicable.
All plans are subject to amendments as approved by the relevant authorities.



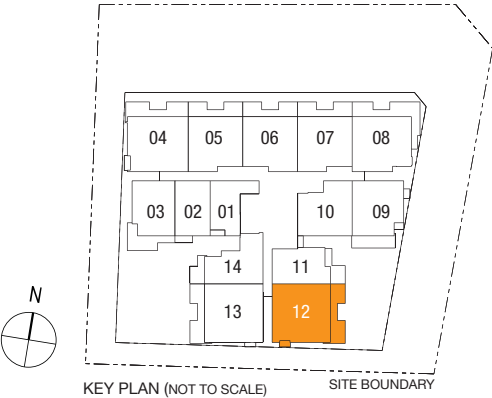
TYPE C1(R)

3 bdrm
74 sq m

#02-12
#03-12



Note: Unit area includes a/c ledge & / or terrace & / or balcony & / or PES where applicable.
All plans are subject to amendments as approved by the relevant authorities.

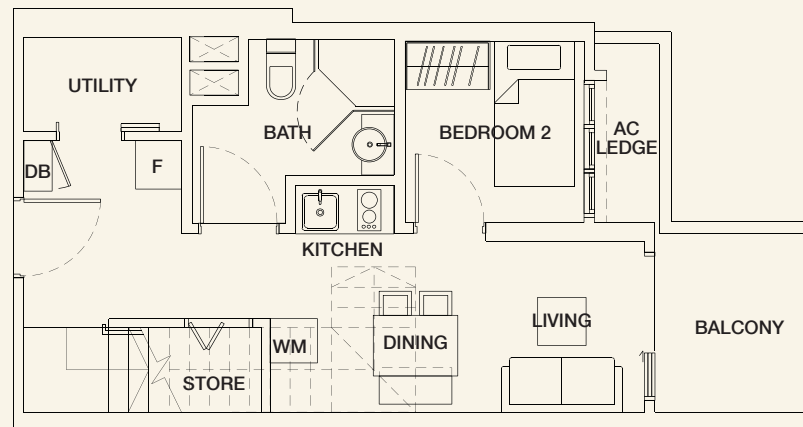


PENTHOUSE

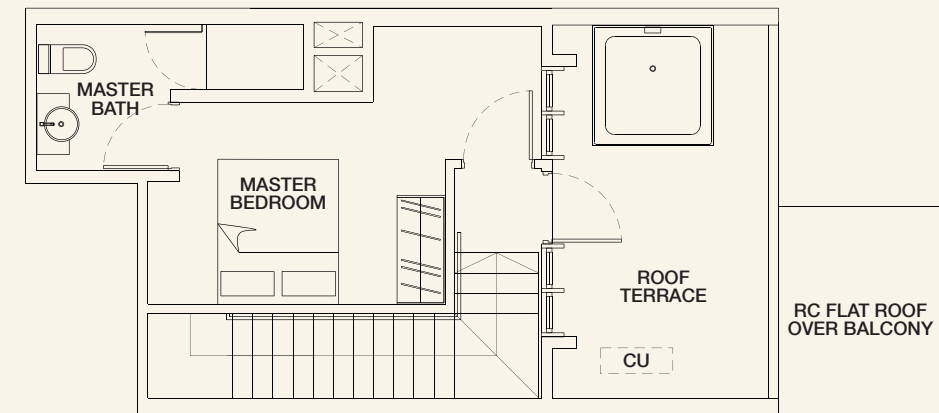
TYPE PH-B1

2 bdrm
82 sq m

#04-11

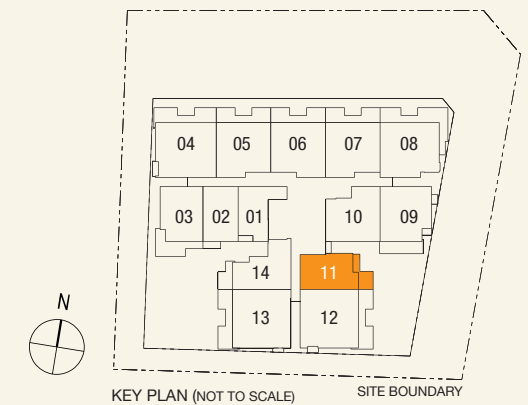


LOWER LEVEL



UPPER LEVEL

Note: Unit area includes a/c ledge & / or void & / or terrace & / or balcony & / or PES at unit roof level where applicable.
All plans are subject to amendments as approved by the relevant authorities.



KEY PLAN (NOT TO SCALE)

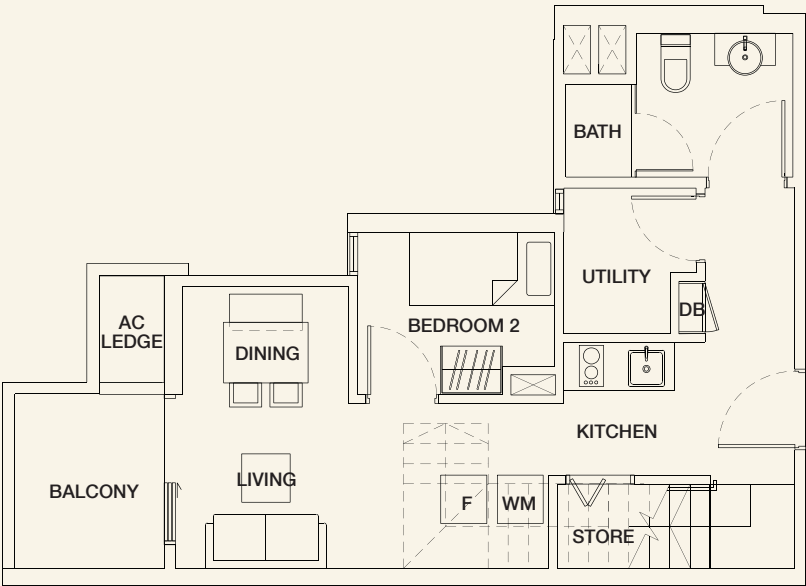
SITE BOUNDARY

PENTHOUSE

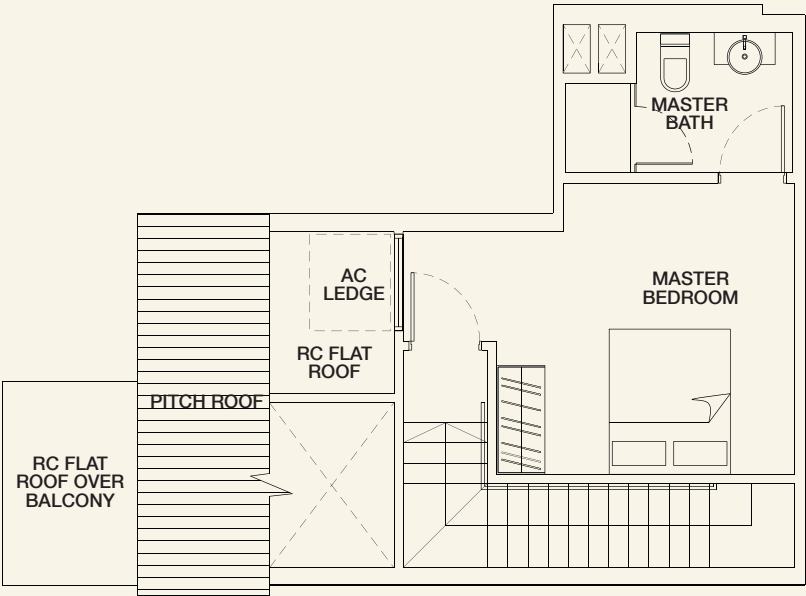
TYPE PH-B2

2 bdrm
76 sq m

#04-14

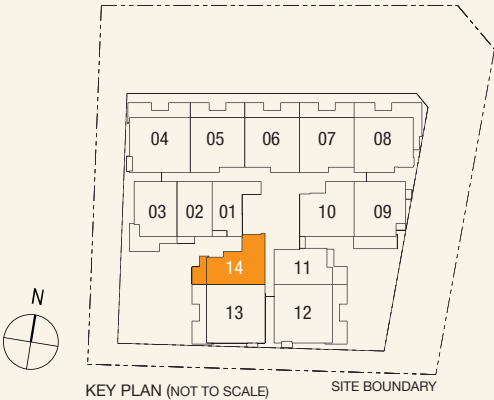


LOWER LEVEL



UPPER LEVEL

Note: Unit area includes a/c ledge & / or void & / or terrace & / or balcony & / or PES at unit roof level where applicable.
All plans are subject to amendments as approved by the relevant authorities.



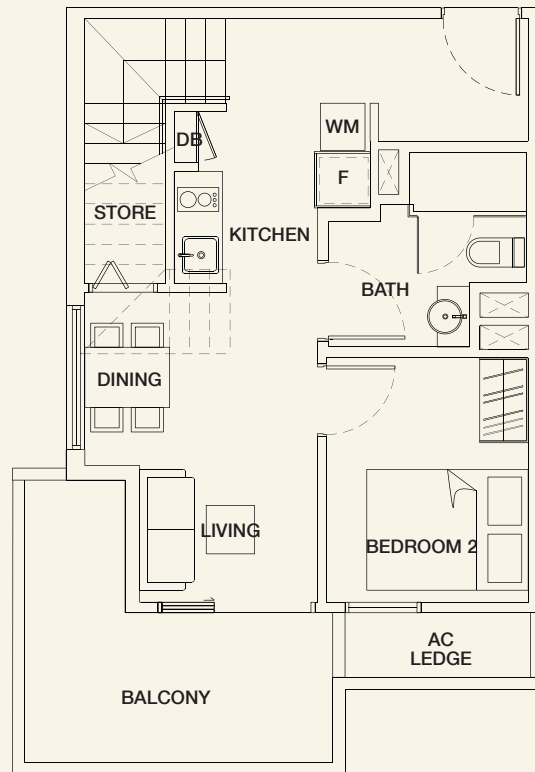
KEY PLAN (NOT TO SCALE) SITE BOUNDARY

PENTHOUSE

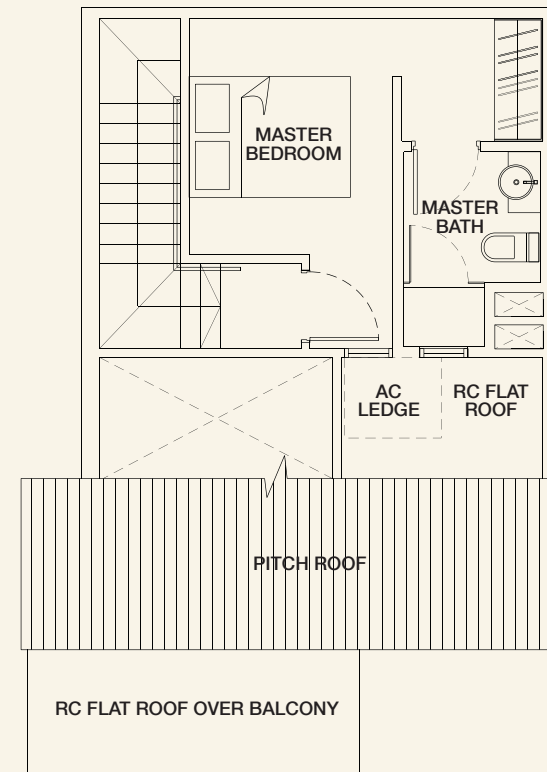
TYPE PH-B3

2 bdrm
78 sq m

#04-03

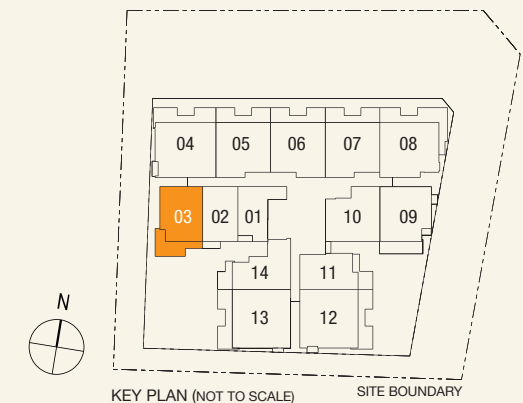


LOWER LEVEL



UPPER LEVEL

Note: Unit area includes a/c ledge & / or void & / or terrace & / or balcony & / or PES at unit roof level where applicable.
All plans are subject to amendments as approved by the relevant authorities.



KEY PLAN (NOT TO SCALE)

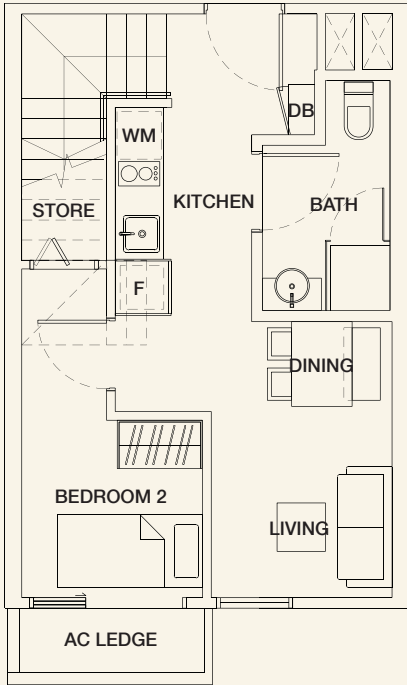
SITE BOUNDARY

PENTHOUSE

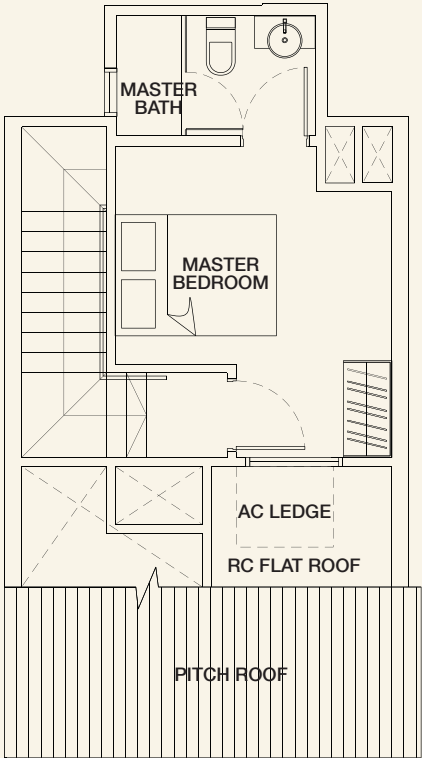
TYPE PH-B4

2 bdrm
61 sq m

#04-02

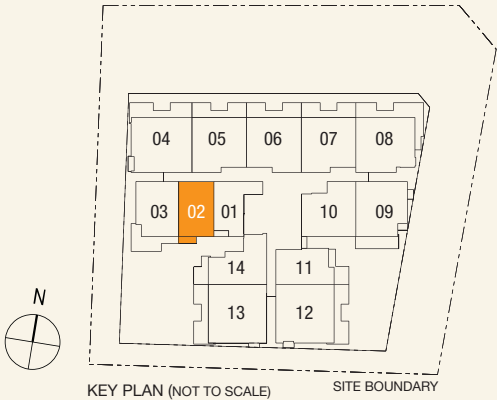


LOWER LEVEL



UPPER LEVEL

Note: Unit area includes a/c ledge & / or void & / or terrace & / or balcony & / or PES at unit roof level where applicable.
All plans are subject to amendments as approved by the relevant authorities.

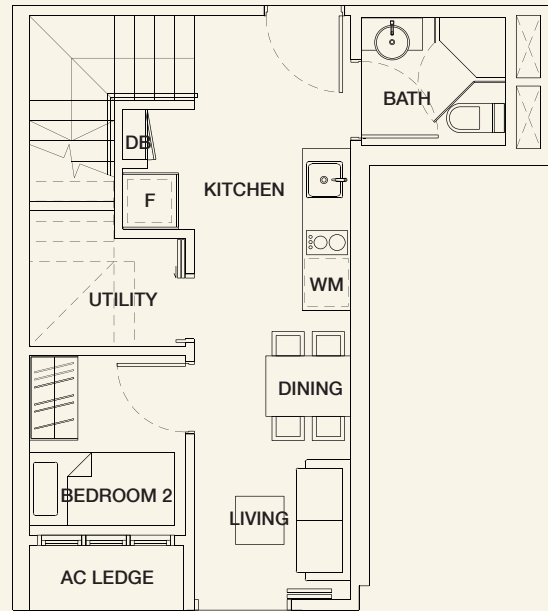


PENTHOUSE

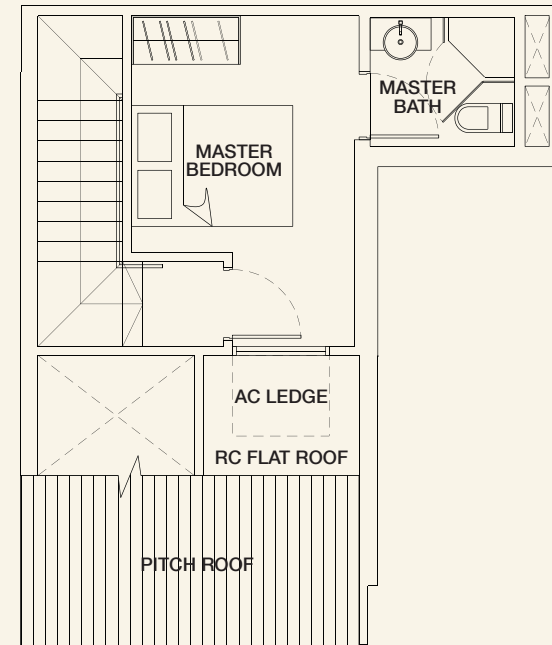
TYPE PH-B5

2 bdrm
57 sq m

#04-01

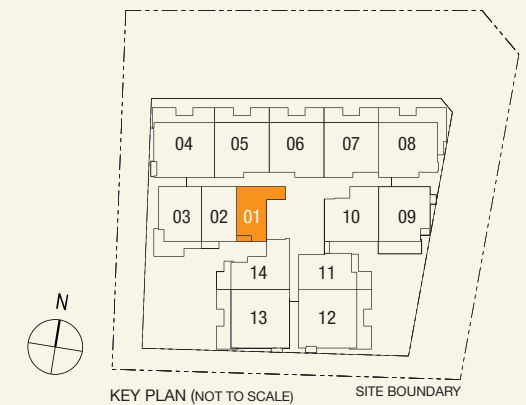


LOWER LEVEL



UPPER LEVEL

Note: Unit area includes a/c ledge & / or void & / or terrace & / or balcony & / or PES at unit roof level where applicable.
All plans are subject to amendments as approved by the relevant authorities.



KEY PLAN (NOT TO SCALE)

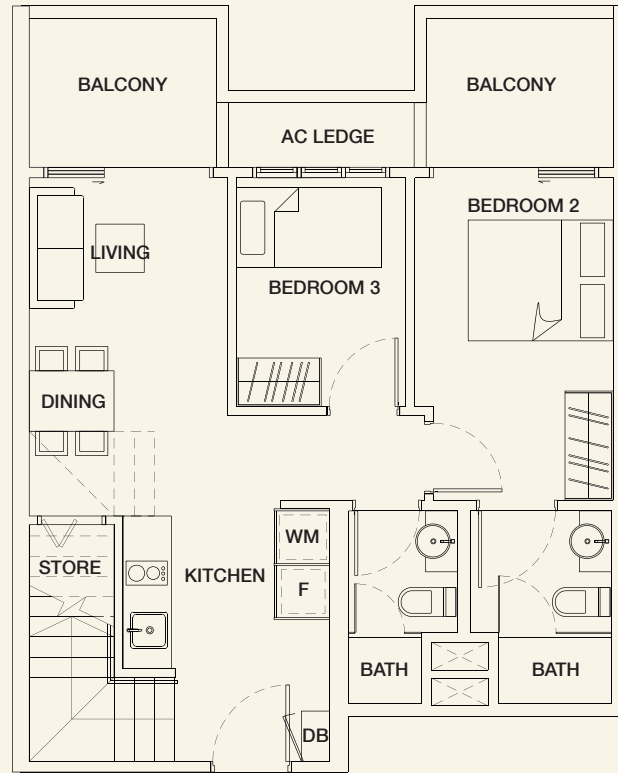
SITE BOUNDARY

PENTHOUSE

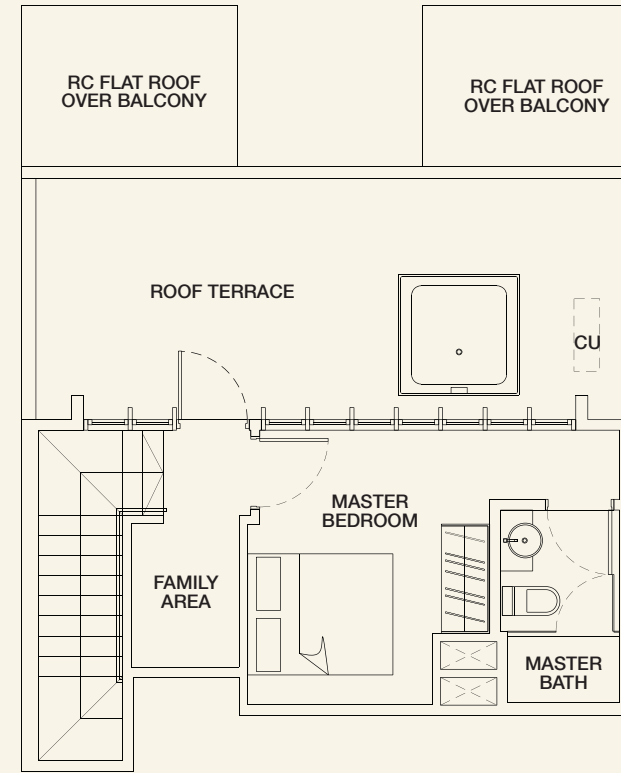
TYPE PH-C1(L)

3 bdrm
113 sq m

#04-05
#04-07

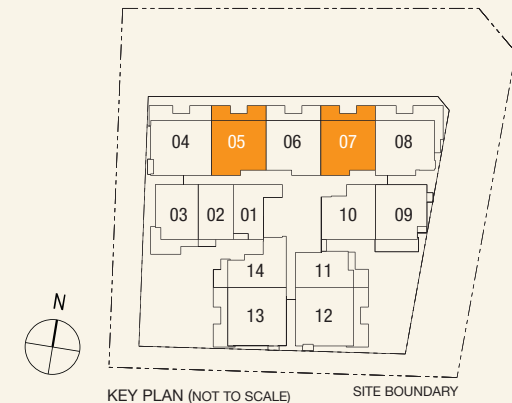


LOWER LEVEL



UPPER LEVEL

Note: Unit area includes a/c ledge & / or void & / or terrace & / or balcony & / or PES at unit roof level where applicable.
All plans are subject to amendments as approved by the relevant authorities.

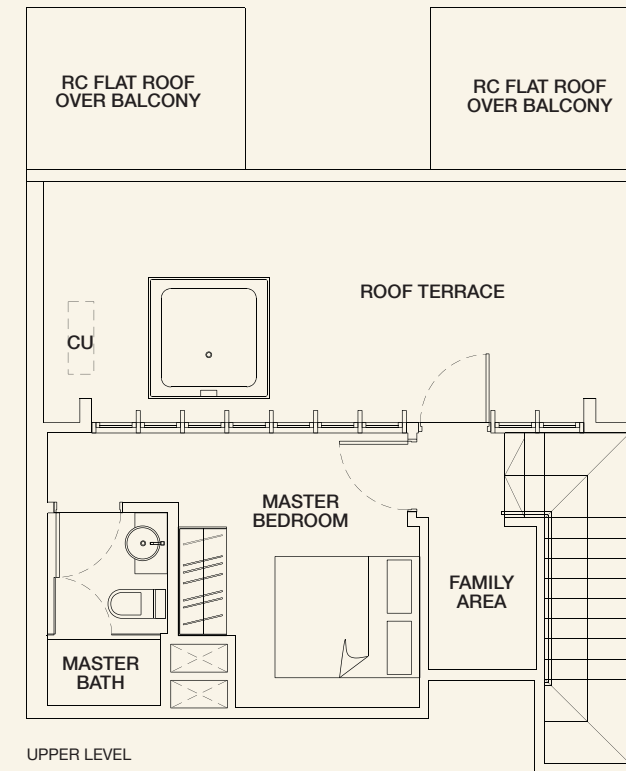
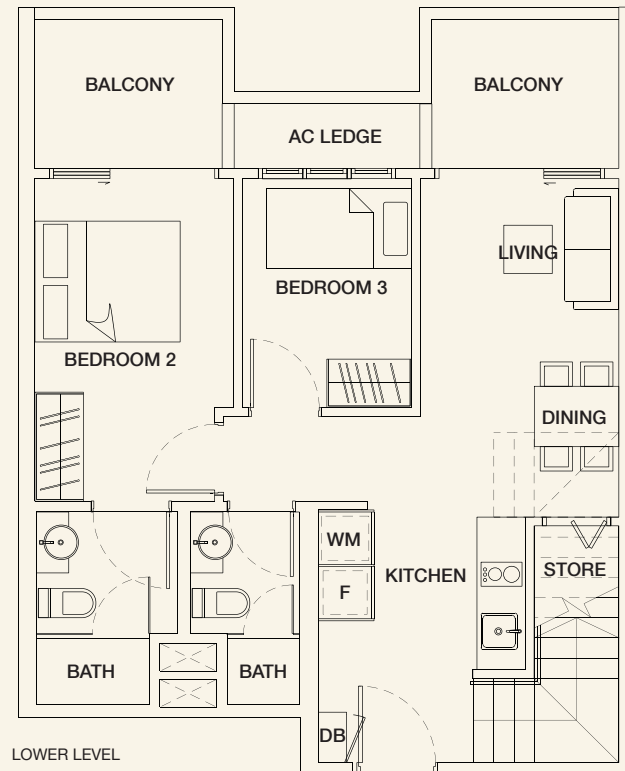


PENTHOUSE

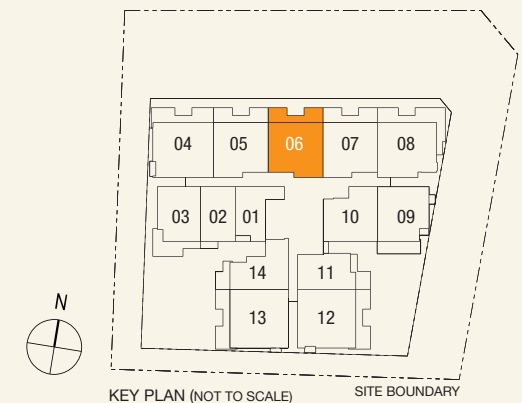
TYPE PH-C1(R)

3 bdrm
113 sq m

#04-06



Note: Unit area includes a/c ledge & /or void & /or terrace & /or balcony & /or PES at unit roof level where applicable.
All plans are subject to amendments as approved by the relevant authorities.

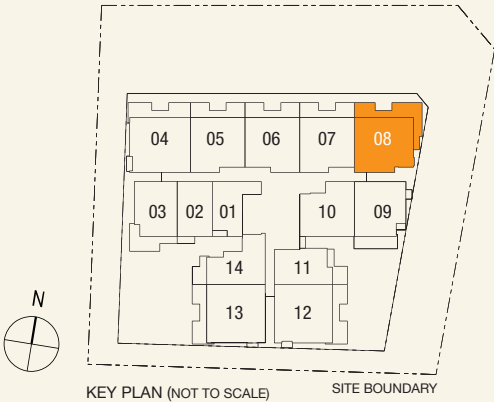
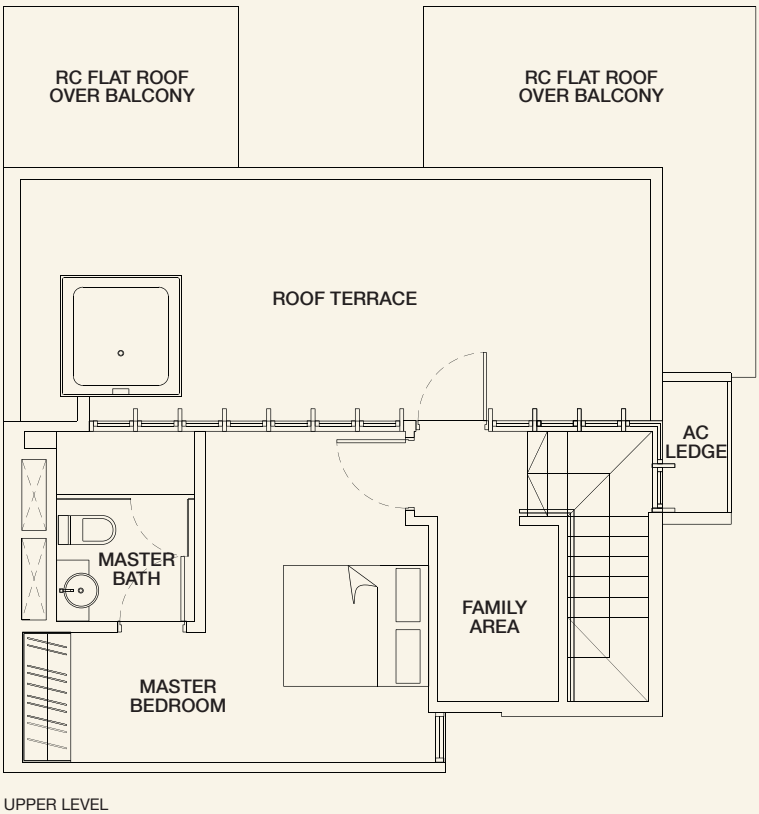
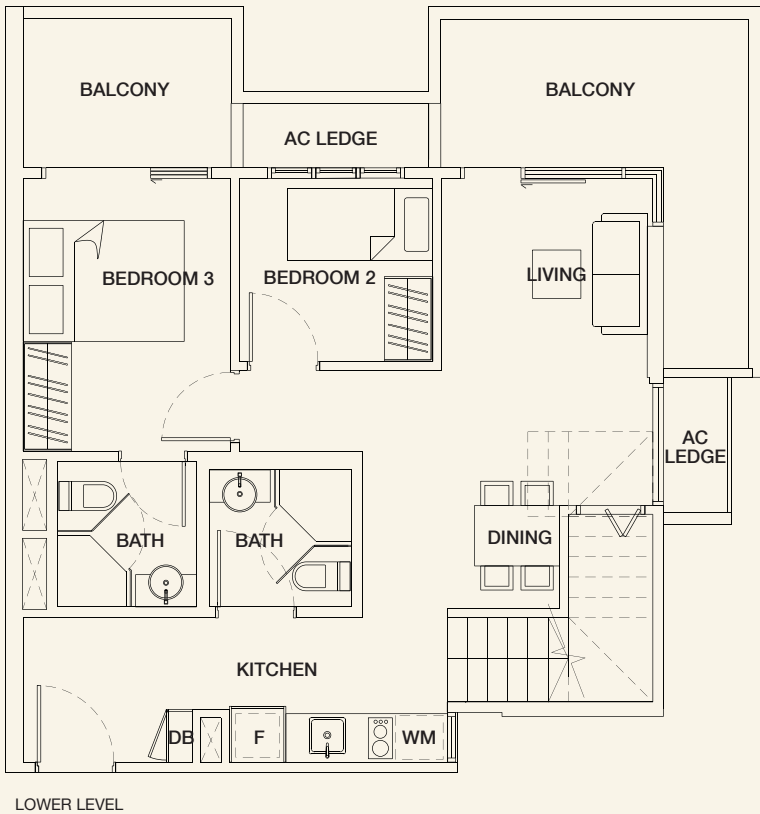


PENTHOUSE

TYPE PH-C2

3 bdrm
133 sq m

#04-08



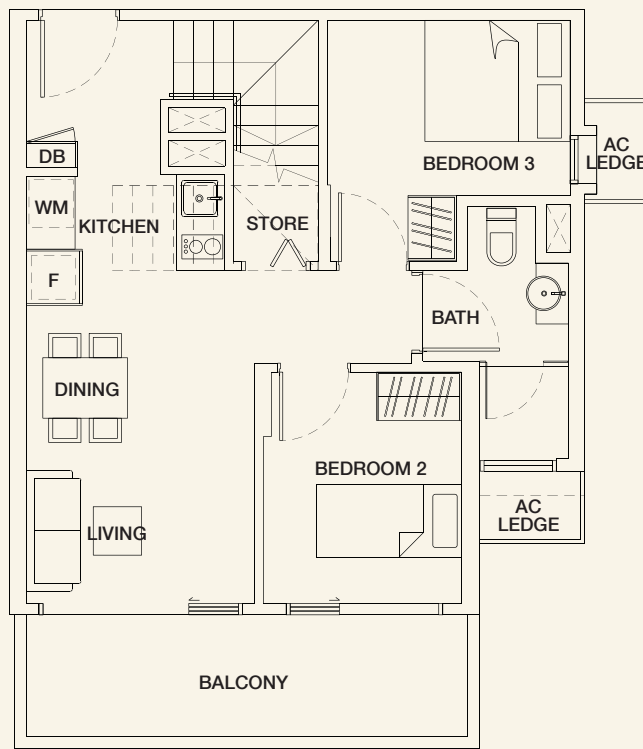
Note: Unit area includes a/c ledge & / or void & / or terrace & / or balcony & / or PES at unit roof level where applicable.
All plans are subject to amendments as approved by the relevant authorities.

PENTHOUSE

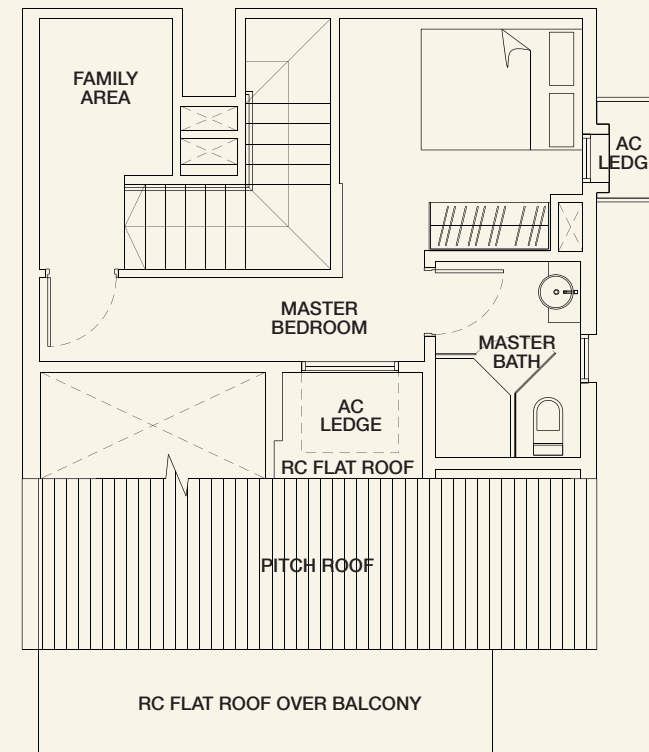
TYPE PH-C3

3 bdrm
93 sq m

#04-09

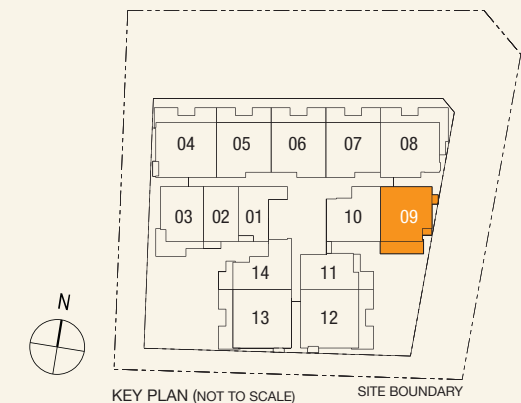


LOWER LEVEL



UPPER LEVEL

Note: Unit area includes a/c ledge & / or void & / or terrace & / or balcony & / or PES at unit roof level where applicable.
All plans are subject to amendments as approved by the relevant authorities.

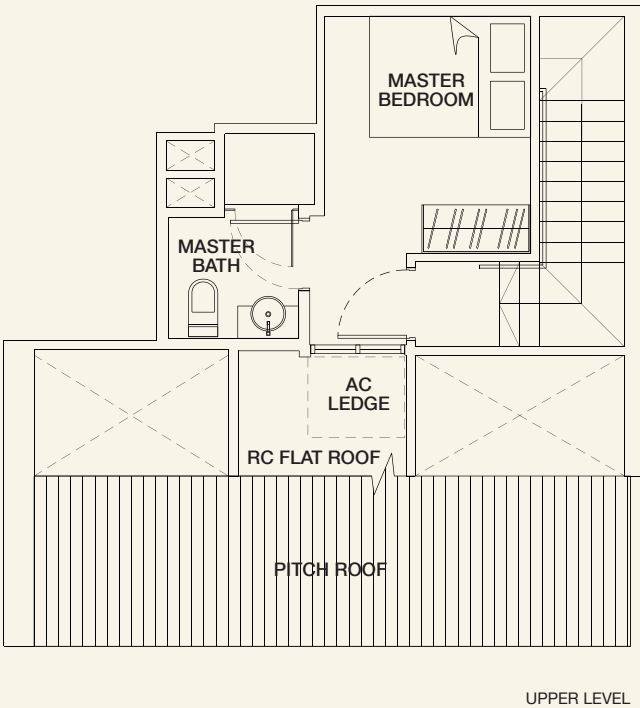
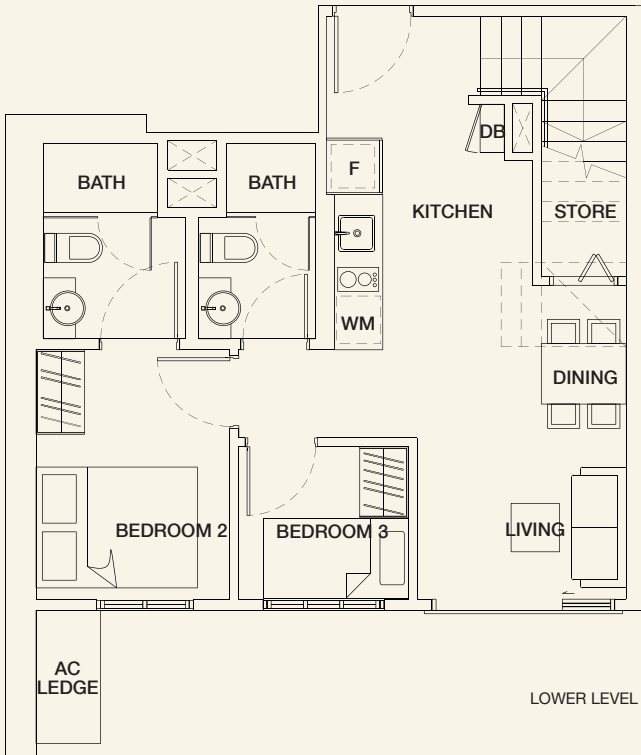


PENTHOUSE

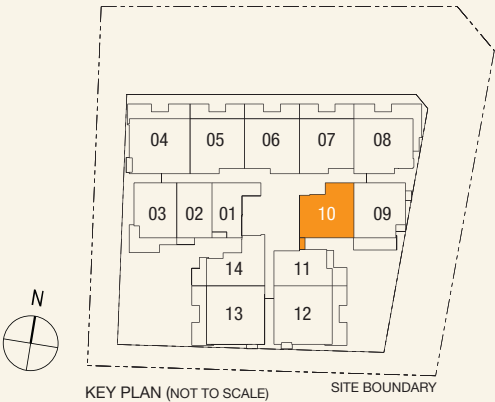
TYPE PH-C4

3 bdrm
73 sq m

#04-10



Note: Unit area includes a/c ledge & / or void & / or terrace & / or balcony & / or PES at unit roof level where applicable.
All plans are subject to amendments as approved by the relevant authorities.

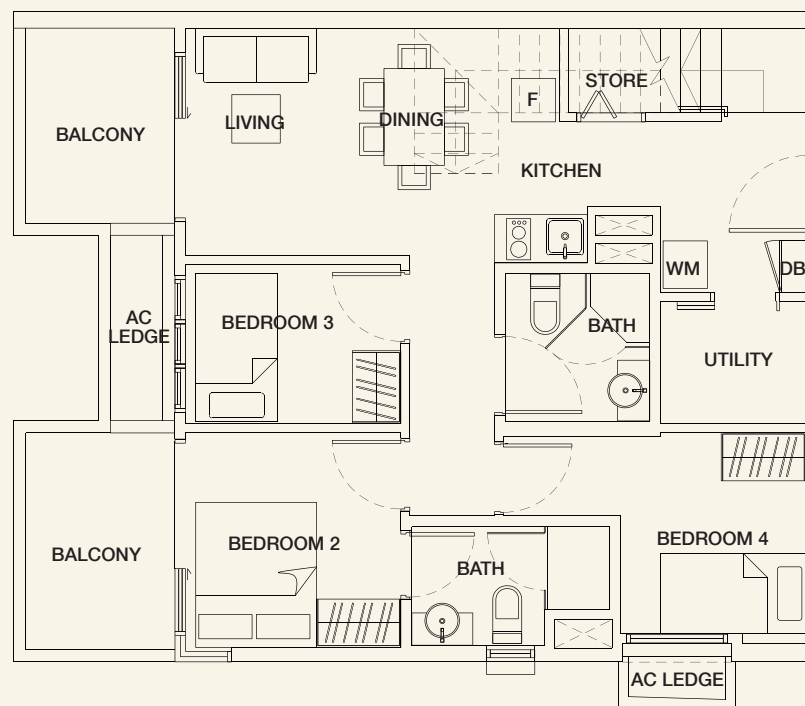


PENTHOUSE

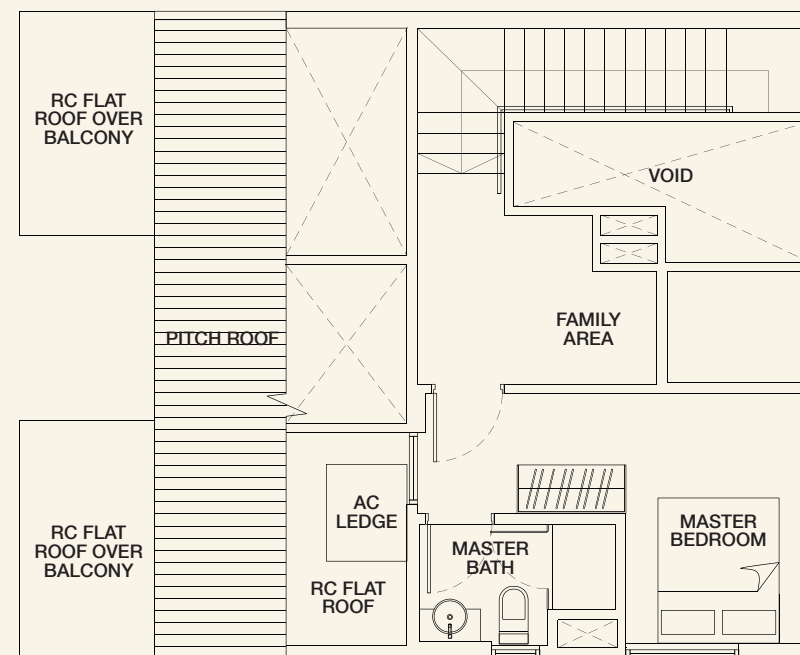
TYPE **PH-D1(L)**

4 bdrm
112 sq m

#04-13

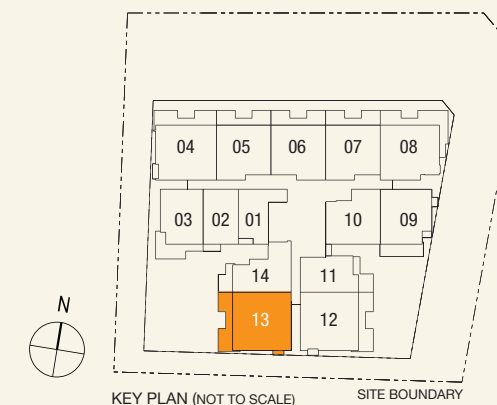


LOWER LEVEL



UPPER LEVEL

Note: Unit area includes a/c ledge & /or void & /or terrace & /or balcony & /or PES at unit roof level where applicable.
All plans are subject to amendments as approved by the relevant authorities.

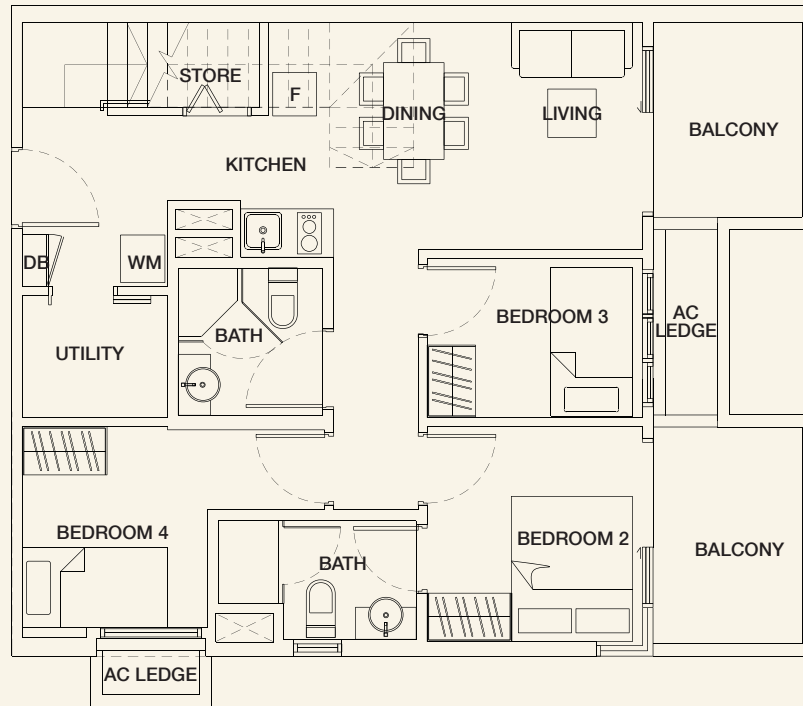


PENTHOUSE

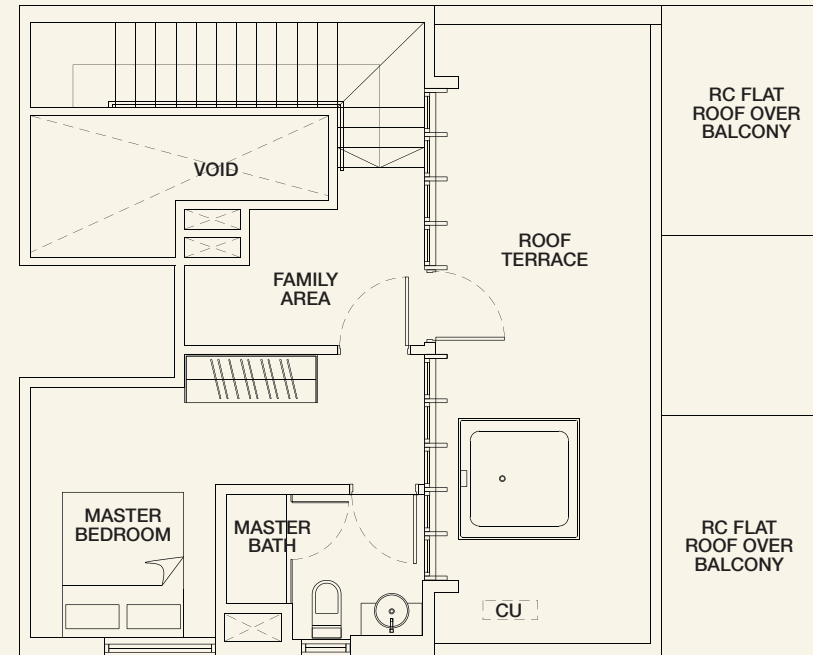
TYPE PH-D1(R)

4 bdrm
133 sq m

#04-12

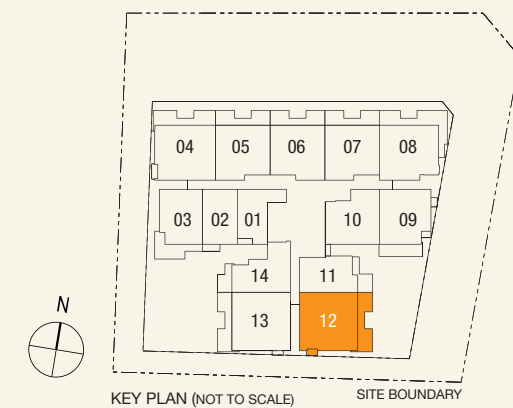


LOWER LEVEL



UPPER LEVEL

Note: Unit area includes a/c ledge & /or void & /or terrace & /or balcony & /or PES at unit roof level where applicable.
All plans are subject to amendments as approved by the relevant authorities.



KEY PLAN (NOT TO SCALE)

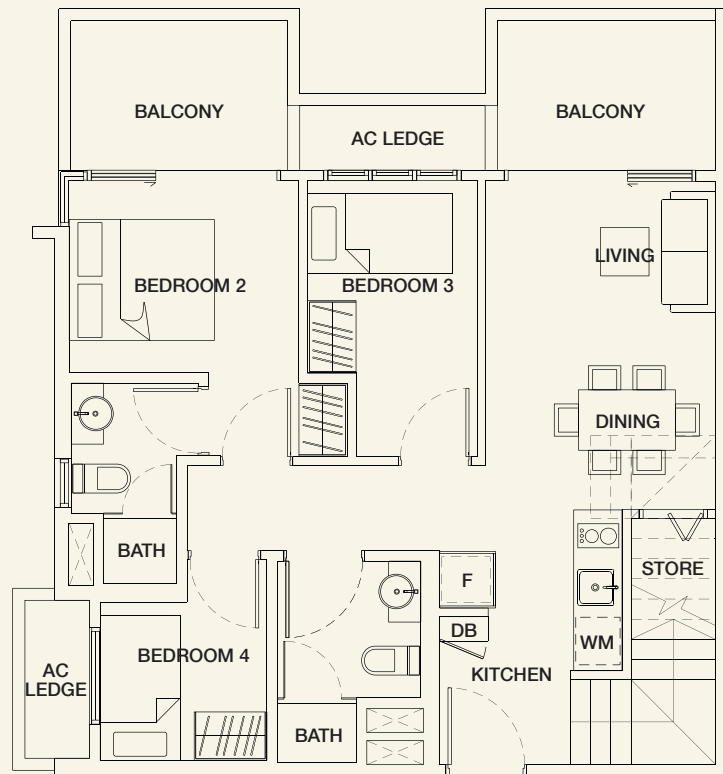
SITE BOUNDARY

PENTHOUSE

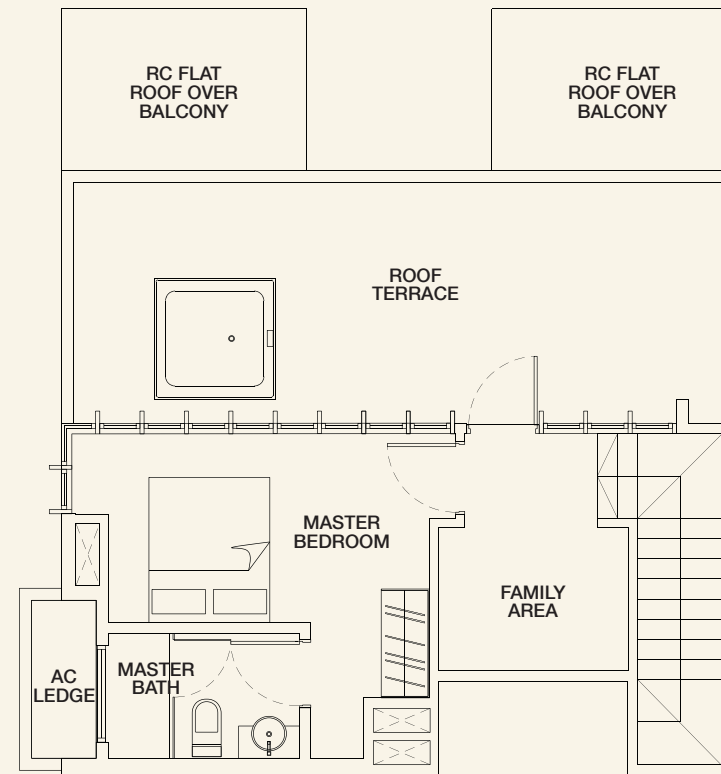
TYPE PH-D2

4 bdrm
131 sq m

#04-04



LOWER LEVEL



UPPER LEVEL

Note: Unit area includes a/c ledge & / or void & / or terrace & / or balcony & / or PES at unit roof level where applicable.
All plans are subject to amendments as approved by the relevant authorities.

