



Artist's Impression

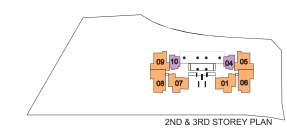
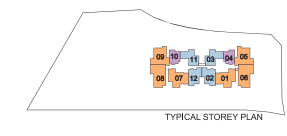
UNITS DISTRIBUTION

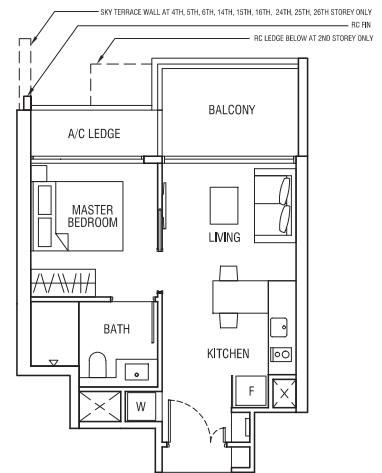
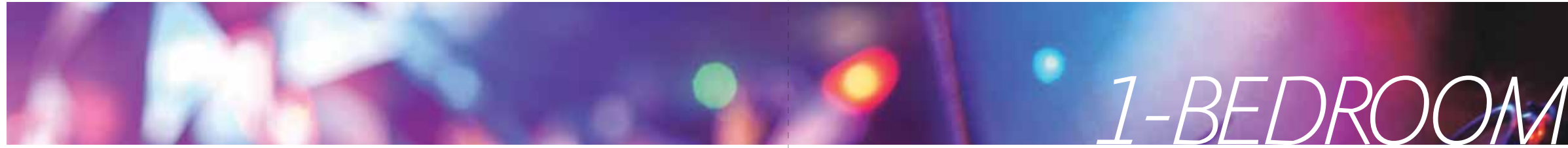
TOWER 28

	01	02	03	04	05	06	07	08	09	10	11	12
40 th	ODYSSEY											
39 th	C1Pb	B1Pb	B2P	A1P	C3-1P	C2-1P	C1Pa	C2P	C3P	A1P	B2P	B1Pa
38 th	C1d	B1b	B2a	A1a	C3-1	C2-1	C1b	C2	C3	A1a	B2b	B1a
37 th	C1d	B1g	B2d	A1a	C3-1	C2-1	C1c	C2	C3	A1e	B2e	B1e
36 th	C1d	B1f	B2a	A1a	C3-1	C2-1	C1a	C2	C3	A1a	B2a	B1a
35 th	C1d	B1b	B2a	A1a	C3-1	C2-1	C1b	C2	C3	A1a	B2b	B1a
34 th	C1d	B1g	B2d	A1a	C3-1	C2-1	C1c	C2	C3	A1e	B2e	B1e
33 rd	C1d	B1f	B2a	A1a	C3-1	C2-1	C1a	C2	C3	A1a	B2a	B1a
32 nd	C1d	B1b	B2a	A1a	C3-1	C2-1	C1b	C2	C3	A1a	B2b	B1a
31 st	C1d	B1g	B2d	A1a	C3-1	C2-1	C1c	C2	C3	A1e	B2e	B1e
30 th	C1d	B1f	B2a	A1a	C3-1	C2-1	C1a	C2	C3	A1a	B2a	B1a
29 th	C1d	B1f	B2b	A1a	C3-1	C2-1	C1a	C2	C3	A1d	B2a	B1b
28 th	C1d	B1b	B2a	A1a	C3-1	C2-1	C1b	C2	C3	A1a	B2b	B1a
27 th	C1e	B1g	B2f	A1a	C3-1	C2-1	C1c	C2	C3	A1c	B2c	B1d
26 th				A1a	C3-1	C2-1	C1a	C2	C3	A1a	A2a	B1a
25 th	VOYAGE			A1a	C3-1	C2-1	C1b	C2	C3	A1a	A2a	B1a
24 th				A1a	C3-1	C2-1	C1c	C2	C3	A1b	A2b	B1e
23 rd	C1d	B1f	B2a	A1a	C3-1	C2-1	C1a	C2	C3	A1a	B2a	B1a
22 nd	C1d	B1f	B2a	A1a	C3-1	C2-1	C1b	C2	C3	A1a	B2b	B1a
21 st	C1d	B1g	B2d	A1a	C3-1	C2-1	C1c	C2	C3	A1e	B2e	B1e
20 th	C1d	B1f	B2a	A1a	C3-1	C2-1	C1a	C2	C3	A1a	B2a	B1a
19 th	C1d	B1f	B2b	A1a	C3-1	C2-1	C1a	C2	C3	A1d	B2a	B1b
18 th	C1d	B1f	B2a	A1a	C3-1	C2-1	C1b	C2	C3	A1a	B2b	B1a
17 th	C1d	B1g	B2f	A1a	C3-1	C2-1	C1c	C2	C3	A1c	B2c	B1d
16 th	C1d			A1a	C3-1	C2-1	C1a	C2	C3	A1a	A2a	
15 th	C1d	JOURNEY		A1a	C3-1	C2-1	C1b	C2	C3	A1a	A2a	JOURNEY
14 th	C1d			A1a	C3-1	C2-1	C1c	C2	C3	A1b	A2b	
13 th	C1d	B1f	B2a	A1a	C3-1	C2-1	C1a	C2	C3	A1a	B2a	B1a
12 th	C1d	B1f	B2a	A1a	C3-1	C2-1	C1b	C2	C3	A1a	B2b	B1a
11 th	C1d	B1g	B2d	A1a	C3-1	C2-1	C1c	C2	C3	A1e	B2e	B1d
10 th	C1d	B1f	B2a	A1a	C3-1	C2-1	C1a	C2	C3	A1a	B2a	B1a
9 th	C1d	B1f	B2b	A1a	C3-1	C2-1	C1a	C2	C3	A1d	B2a	B1a
8 th	C1d	B1f	B2a	A1a	C3-1	C2-1	C1b	C2	C3	A1a	B2b	B1a
7 th	C1d	B1f	B2f	A1a	C3-1	C2-1	C1c	C2	C3	A1c	B2c	B1c
6 th	C1d	B1f		A1a	C3-1	C2-1		C2	C3	A1a	A2a	
5 th	C1d	B1f	PASSAGE	A1a	C3-1	C2-1	PASSAGE	C2	C3	A1a	A2a	PASSAGE
4 th	C1d	B1f		A1a	C3-1	C2-1		C2	C3	A1b	A2b	
3 rd	C1d			A1a	C3-1	C2-1	C1a	C2	C3	A1a		
2 nd	C1d			A1a	C3-1	C2-1	C1a	C2	C3	A1a		
1 st	C1Gb			A1G	C3-1G	C2-1G	C1Ga	C2G	C3G	A1G		
B1	DROP OFF											
B2	CARPARK											
B3												
B4												

Legend

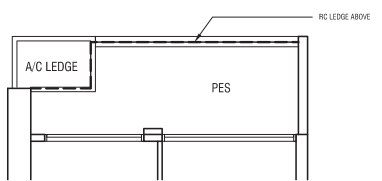
- 1 BEDROOM
- 2 BEDROOM
- 3 BEDROOM
- SKY TERRACE



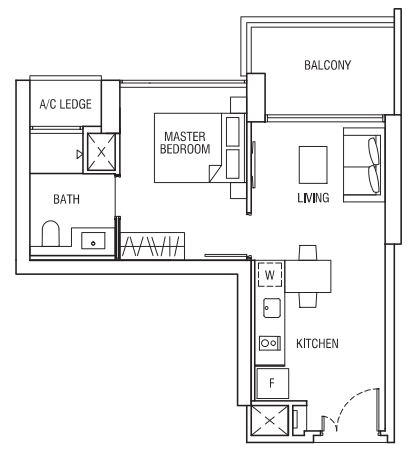


TYPE A1a
44 sqm (474 sqft)
#02-04 to #38-04

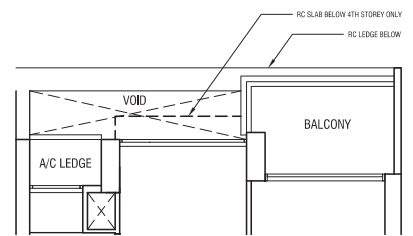
TYPE A1P
44 sqm (474 sqft)
#39-04



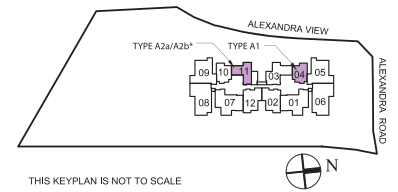
TYPE A1G
47 sqm (506 sqft)
#01-04



TYPE A2a
47 sqm (506 sqft)
#05-11, #06-11, #15-11, #16-11, #25-11, #26-11

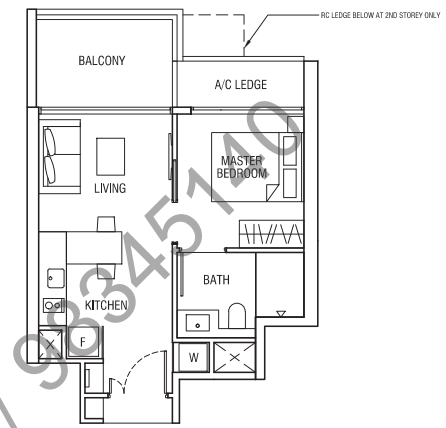


TYPE A2b
47 sqm (506 sqft)
#04-11, #14-11, #24-11



THIS KEYPLAN IS NOT TO SCALE

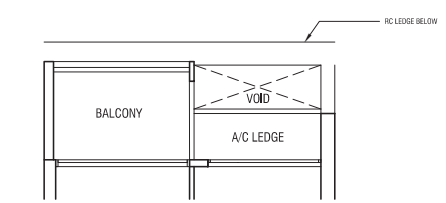
0 1m 2m 5m
The above plan is subject to change as may be approved by relevant authorities
All floor areas are approximate and subject to final survey
*Refer to key plan for 4th, 14th, 24th storey on units distribution page



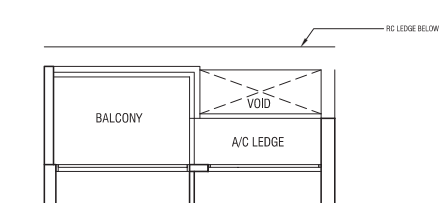
TYPE A1a
44 sqm (474 sqft)

#02-10, #03-10, #05-10, #06-10, #08-10, #10-10, #12-10, #13-10, #15-10, #16-10, #18-10, #20-10, #22-10, #23-10, #25-10, #26-10, #28-10, #30-10, #32-10, #33-10, #35-10, #36-10, #38-10

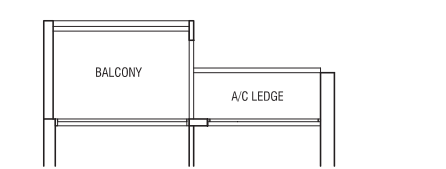
TYPE A1P
44 sqm (474 sqft)
#39-10



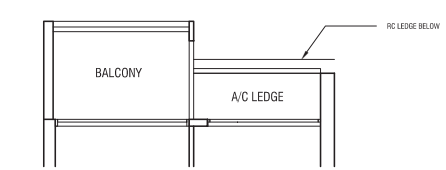
TYPE A1b
44 sqm (474 sqft)
#04-10, #14-10, #24-10



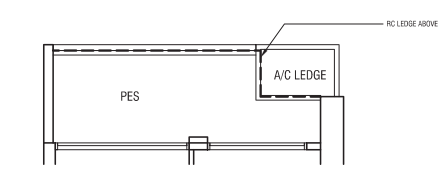
TYPE A1c
44 sqm (474 sqft)
#07-10, #17-10, #27-10



TYPE A1d
44 sqm (474 sqft)
#09-10, #19-10, #29-10

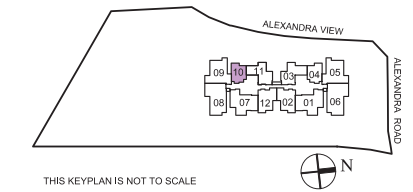


TYPE A1e
44 sqm (474 sqft)
#11-10, #21-10, #31-10, #34-10, #37-10



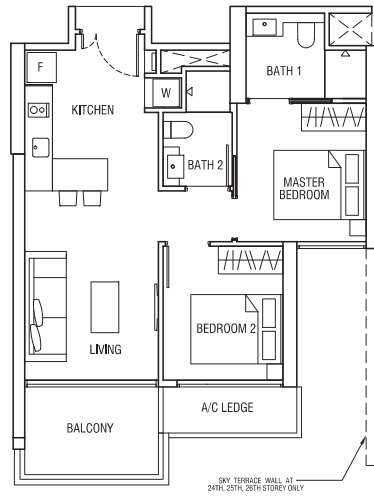
TYPE A1G
47 sqm (506 sqft)
#01-10

0 1m 2m 5m
The above plan is subject to change as may be approved by relevant authorities
All floor areas are approximate and subject to final survey



THIS KEYPLAN IS NOT TO SCALE

2-BEDROOM

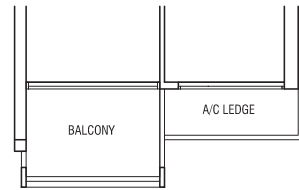


TYPE B1a

63 sqm (678 sqft)
 #08-12, #09-12, #10-12, #12-12, #13-12,
 #18-12, #20-12, #22-12, #23-12, #25-12,
 #26-12, #28-12, #30-12, #32-12, #33-12,
 #35-12, #36-12, #38-12

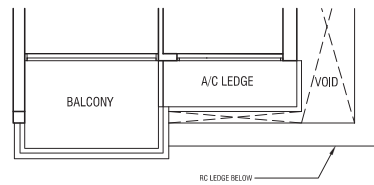
TYPE B1Pa

63 sqm (678 sqft)
 #39-12



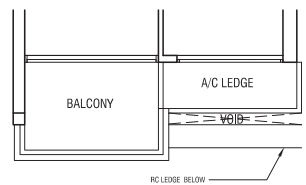
TYPE B1b

63 sqm (678 sqft)
 #19-12, #29-12



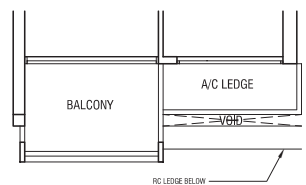
TYPE B1c

63 sqm (678 sqft)
 #07-12



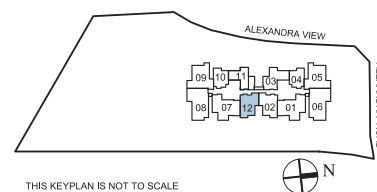
TYPE B1d

63 sqm (678 sqft)
 #11-12, #17-12, #27-12



TYPE B1e

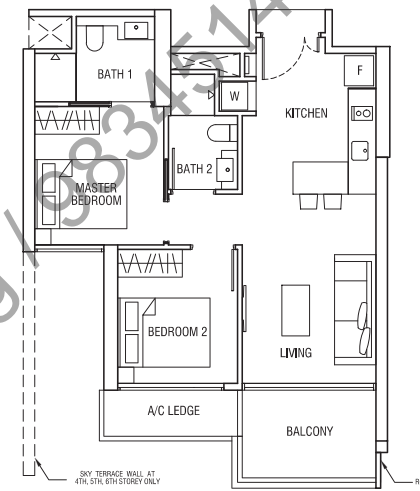
63 sqm (678 sqft)
 #21-12, #24-12, #31-12, #34-12, #37-12



THIS KEYPLAN IS NOT TO SCALE



The above plan is subject to change as may be approved by relevant authorities
 All floor areas are approximate and subject to final survey

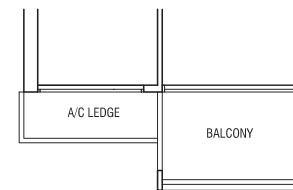


TYPE B1f

63 sqm (678 sqft)
 #04-02, #05-02, #06-02, #07-02, #08-02,
 #09-02, #10-02, #12-02, #13-02, #16-02,
 #19-02, #20-02, #22-02, #23-02, #29-02,
 #30-02, #33-02, #36-02

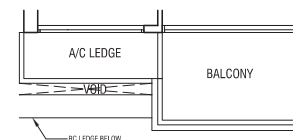
TYPE B1Pb

63 sqm (678 sqft)
 #39-02



TYPE B1b

63 sqm (678 sqft)
 #28-02, #32-02, #35-02, #38-02



TYPE B1g

63 sqm (678 sqft)
 #11-02, #17-02, #21-02, #27-02, #31-02,
 #34-02, #37-02

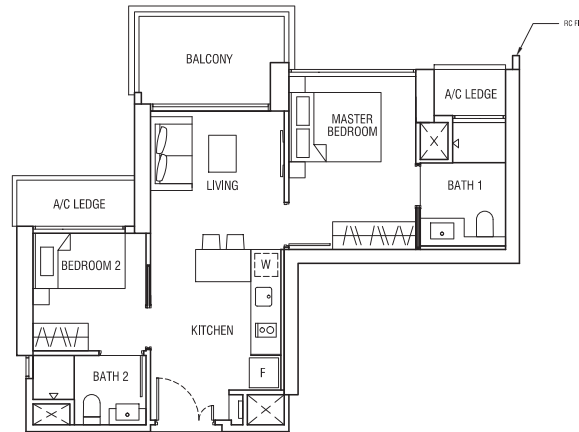


THIS KEYPLAN IS NOT TO SCALE



The above plan is subject to change as may be approved by relevant authorities
 All floor areas are approximate and subject to final survey

2-BEDROOM

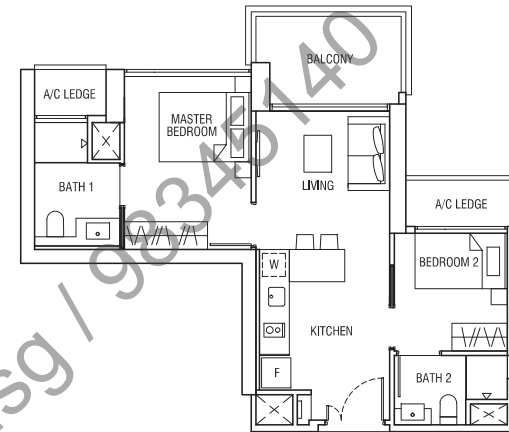


TYPE B2a

61 sqm (657 sqft)
 #08-03, #10-03, #12-03, #13-03, #18-03
 #20-03, #22-03, #23-03, #28-03, #30-03
 #32-03, #33-03, #35-03, #36-03, #38-03

TYPE B2P

61 sqm (657 sqft)
 #39-03

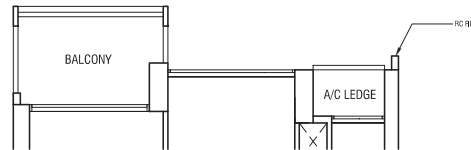


TYPE B2a

61 sqm (657 sqft)
 #09-11, #10-11, #13-11, #19-11, #20-11
 #23-11, #29-11, #30-11, #33-11, #36-11

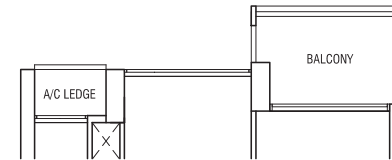
TYPE B2P

61 sqm (657 sqft)
 #39-11



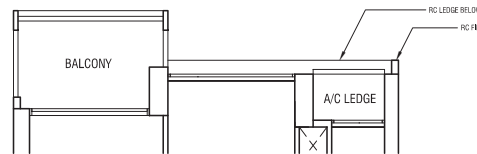
TYPE B2b

61 sqm (657 sqft)
 #09-03, #19-03, #29-03



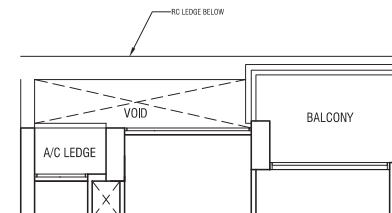
TYPE B2b

61 sqm (657 sqft)
 #08-11, #12-11, #18-11, #22-11, #28-11,
 #32-11, #35-11, #38-11



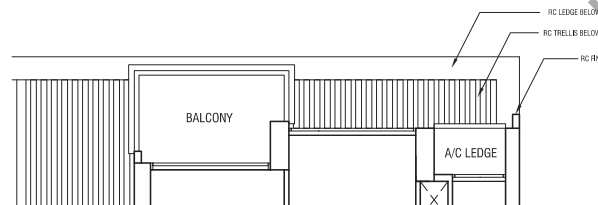
TYPE B2d

61 sqm (657 sqft)
 #11-03, #21-03, #31-03, #34-03, #37-03



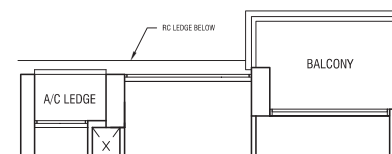
TYPE B2c

61 sqm (657 sqft)
 #07-11, #17-11, #27-11



TYPE B2f

61 sqm (657 sqft)
 #07-03, #17-03, #27-03



TYPE B2e

61 sqm (657 sqft)
 #11-11, #21-11, #31-11, #34-11, #37-11



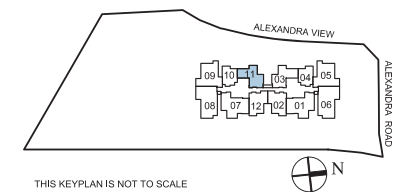
The above plan is subject to change as may be approved by relevant authorities
 All floor areas are approximate and subject to final survey



THIS KEYPLAN IS NOT TO SCALE

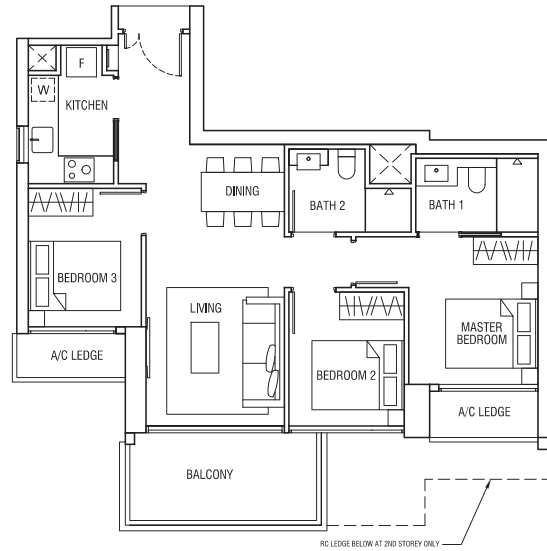


The above plan is subject to change as may be approved by relevant authorities
 All floor areas are approximate and subject to final survey



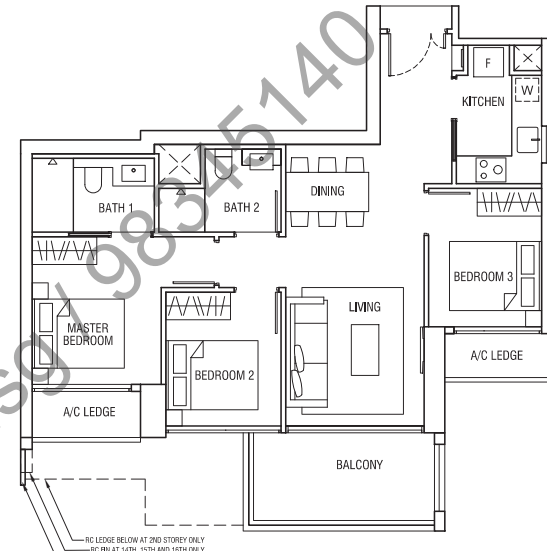
THIS KEYPLAN IS NOT TO SCALE

3-BEDROOM



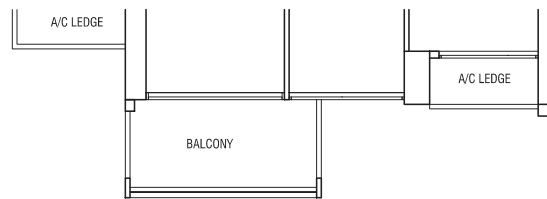
TYPE C1a
86 sqm (926 sqft)
#02-07, #03-07, #09-07, #10-07, #13-07
#16-07, #19-07, #20-07, #23-07, #26-07
#29-07, #30-07, #33-07, #36-07

TYPE C1Pa
86 sqm (926 sqft)
#39-07

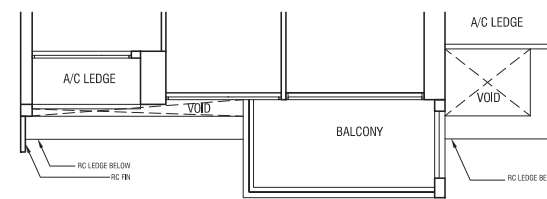


TYPE C1d
86 sqm (926 sqft)
#02-01 to #23-01; #28-01 to #38-01

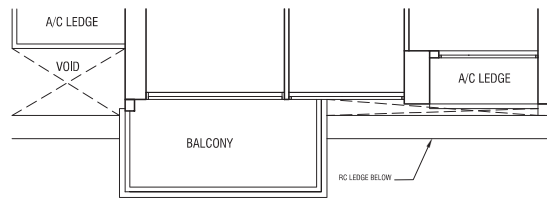
TYPE C1Pb
86 sqm (926 sqft)
#39-01



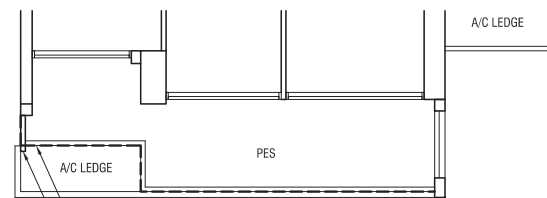
TYPE C1b
86 sqm (926 sqft)
#08-07, #12-07, #15-07, #18-07, #22-07
#25-07, #28-07, #32-07, #35-07, #38-07



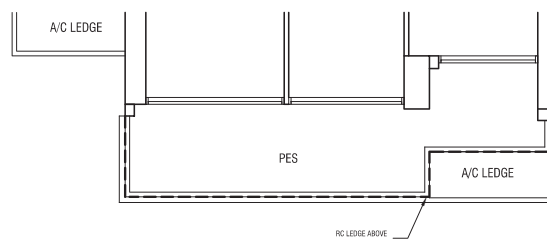
TYPE C1e
86 sqm (926 sqft)
#27-01



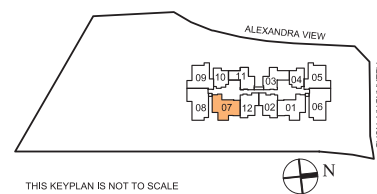
TYPE C1c
86 sqm (926 sqft)
#07-07, #11-07, #14-07, #17-07, #21-07,
#24-07, #27-07, #31-07, #34-07, #37-07



TYPE C1Gb
96 sqm (1033 sqft)
#01-01



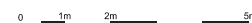
TYPE C1Ga
96 sqm (1033 sqft)
#01-07



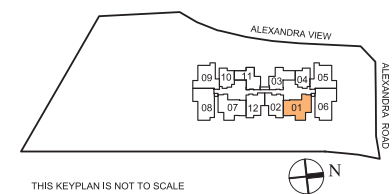
THIS KEYPLAN IS NOT TO SCALE



The above plan is subject to change as may be approved by relevant authorities
All floor areas are approximate and subject to final survey

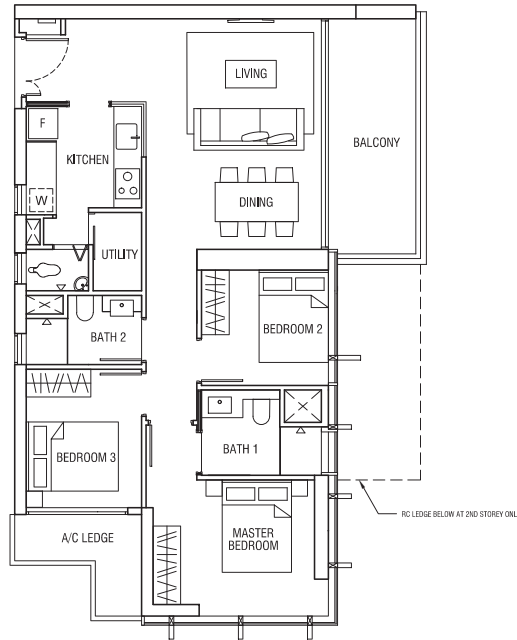


The above plan is subject to change as may be approved by relevant authorities
All floor areas are approximate and subject to final survey



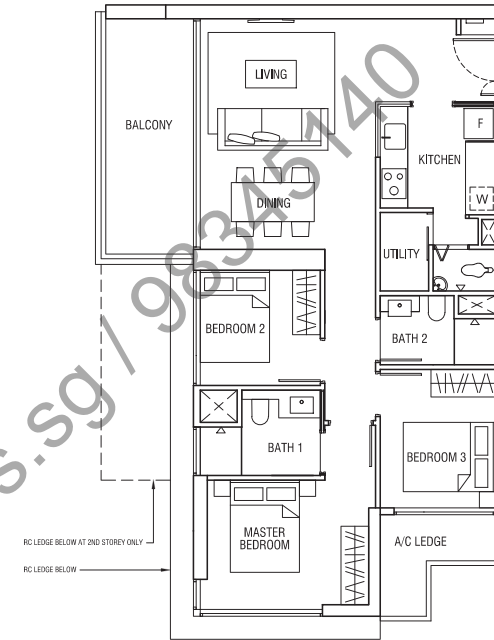
THIS KEYPLAN IS NOT TO SCALE

3-BEDROOM



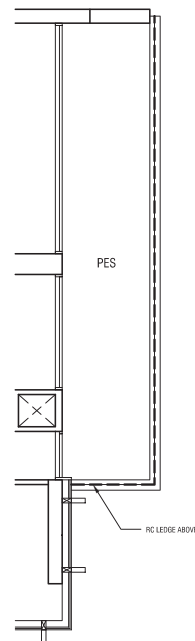
TYPE C2-1
97 sqm (1044 sqft)
#02-06 to #38-06

TYPE C2-1P
97 sqm (1044 sqft)
#39-06

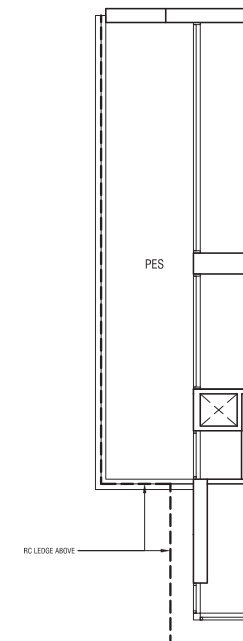


TYPE C2
95 sqm (1023 sqft)
#02-08 to #38-08

TYPE C2P
95 sqm (1023 sqft)
#39-08

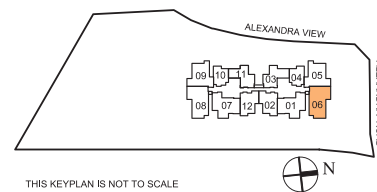


TYPE C2-1G
106 sqm (1141 sqft)
#01-06



TYPE C2G
105 sqm (1130 sqft)
#01-08

0 1m 2m 5m
The above plan is subject to change as may be approved by relevant authorities
All floor areas are approximate and subject to final survey



THIS KEYPLAN IS NOT TO SCALE

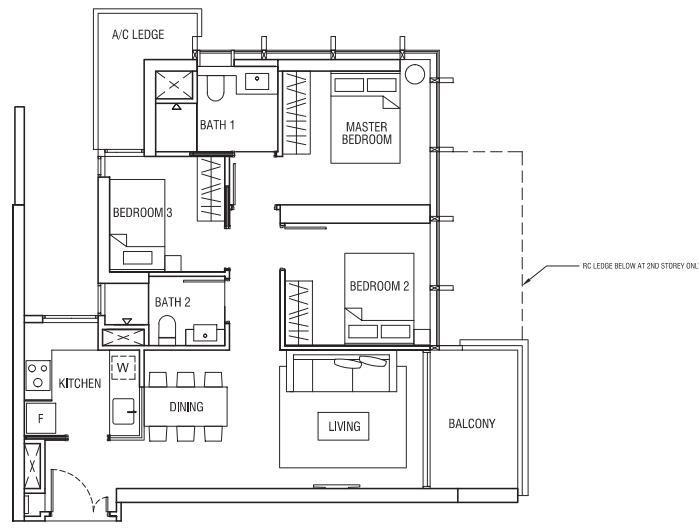
0 1m 2m 5m
The above plan is subject to change as may be approved by relevant authorities
All floor areas are approximate and subject to final survey



THIS KEYPLAN IS NOT TO SCALE

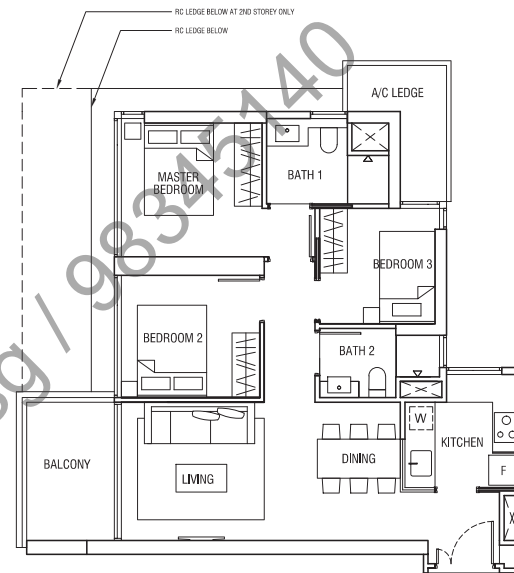
<http://condonewlaunches.sg/> 98345740

3-BEDROOM



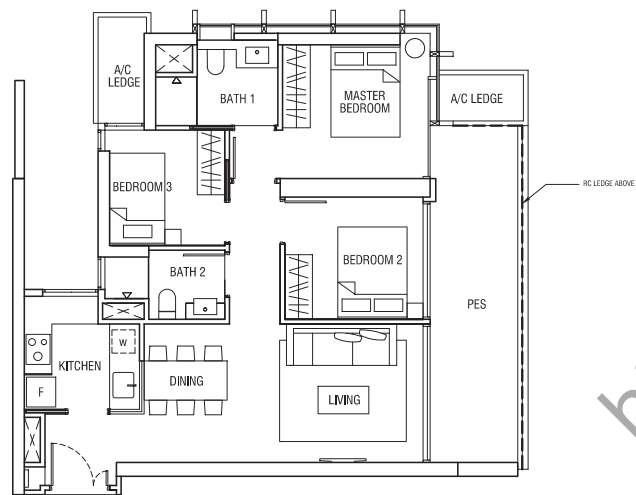
TYPE C3-1
84 sqm (904 sqft)
#02-05 to #38-05

TYPE C3-1P
84 sqm (904 sqft)
#39-05

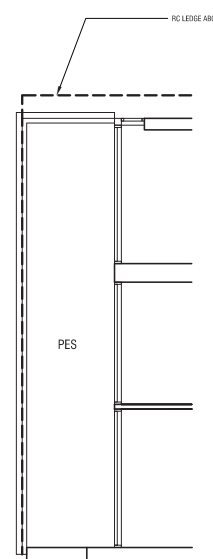


TYPE C3
82 sqm (883 sqft)
#02-09 to #38-09

TYPE C3P
82 sqm (883 sqft)
#39-09



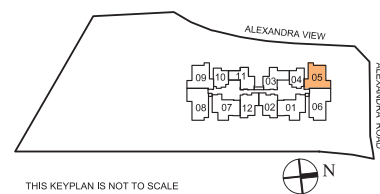
TYPE C3-1G
92 sqm (990 sqft)
#01-05



TYPE C3G
95 sqm (1023 sqft)
#01-09



The above plan is subject to change as may be approved by relevant authorities
All floor areas are approximate and subject to final survey



THIS KEYPLAN IS NOT TO SCALE



The above plan is subject to change as may be approved by relevant authorities
All floor areas are approximate and subject to final survey



THIS KEYPLAN IS NOT TO SCALE

<http://condonewlaunches.sg/> 98345740

DEVELOPER'S PROFILE



LIVE. JOY.

One of Singapore's largest property players, Singapore Land Limited (SingLand) is synonymous with premier property developments, building homes with excellent form and function to deliver joy to homeowners.

SingLand has been setting the benchmark in the residential front with unique and exclusive developments. Notable successful launches include Mon Jervois, an exquisite gem nestled amongst the bounties of nature, the ideal address for those who dream of creating a private sanctuary to call home, one that is surrounded by the old world charm of Bishopgate / Jervois Road Good Class Bungalow area. Thomson Three, conveniently located in the heart of a prestigious district, nestled within a private residential enclave including Good Class Bungalows and other landed properties, lending itself well to the sophisticated and affluent. The Trizon, located in the lush Mount Sinai area and The Paterson near Orchard Road, Singapore's premier shopping and entertainment area. Other outstanding projects include The Sixth Avenue Residences in the prestigious and highly sought after Bukit Timah area, and Archipelago - a home in a park, nestled within the lush greenery of Bedok Reservoir Park.

In the pipeline of more new and exciting development is a luxurious home set within the privileged enclave of Farrer Drive, in the vicinity of the popular Holland Road. With SingLand, you can anticipate the joy of more quality and exciting residential developments in the near future.

SingLand also has about 2.2 million sq ft of office space and nearly 1 million sq ft of retail space across Singapore. Our portfolio includes Singapore Land Tower and Clifford Centre in the heart of Singapore's financial district, Raffles Place, The Gateway with its I.M. Pei designed twin towers, SGX Centre which houses the Singapore Stock Exchange, as well as Marina Square, a large shopping, entertainment, hotel, and commercial complex close to the CBD. Other developments include West Mall, a suburban shopping mall in Bukit Batok, and office developments in Tampines Finance Park, Abacus Plaza and Tampines Plaza.

OTHER DEVELOPMENTS



POLLEN & BLEU RESIDENCES (Upcoming development)

Imagine a place where all things can be beautiful and great. A place where the birds chirp brighter, the grass is glossier and you revel in the echoes of children's laughter. Cascading water features, beautiful alcoves, gyms, bespoke playground and unique garden sculptures, green walls and more, meticulously spread out on three different levels for the enjoyment of the residents.



V ON SHENTON

UIC Limited unveils its flagship development, previously known as the UIC Building located at 5 Shenton Way. The twin tower development comprises a 23-storey office building and a 54-storey residential tower - V on Shenton.



MON JERVOIS

Located in the exclusive vicinity of embassies and good class bungalows in Bishopgate and Chatsworth Road, Mon Jervois is a five-storey boutique development with 109 units. The apartments come in a range of 6 beautifully designed unit types, namely; 1-bedroom + study, 2-bedroom, 2-bedroom Loft units, 3-bedroom, 4-bedroom and the luxurious penthouse collection.



THOMSON THREE

Standing on a huge elevated land of approximately 145,000 sqft, enjoy the posh state of art condominium facilities that fit the lifestyle of you and your family.



THE TRIZON

In the serene and tranquil environment of one of Singapore's most coveted residential areas off Holland Road, The Trizon is just a few minutes' drive to Cold Storage Jelita, Holland Village, Dempsey Hill and the Orchard Road shopping belt.



ARCHIPELAGO

Archipelago is a home in a park, a park in a home. The low rise 5-storey condominium project is nestled within the lush greenery of Bedok Reservoir Park as well as conveniently located near the upcoming Bedok North MRT station.