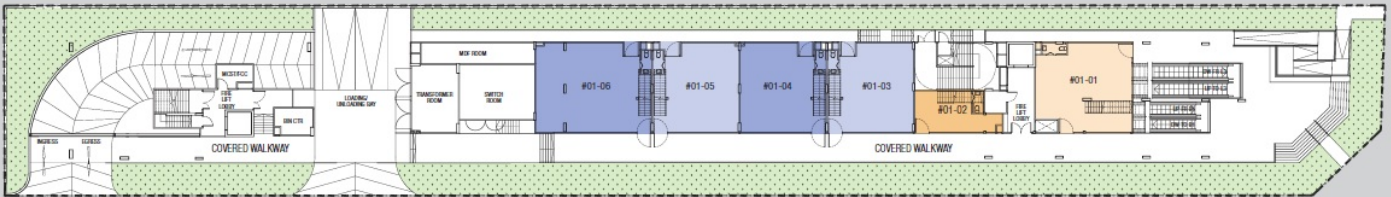
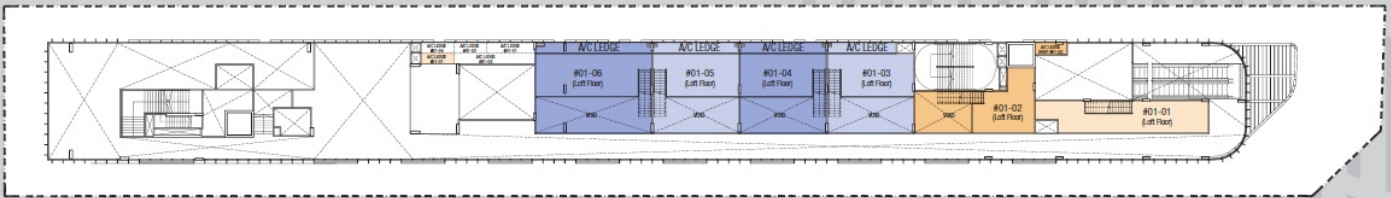


1st storey



2nd storey (loft floor)



RESTAURANTS / F&B

UNIT	#01-03	#01-04	#01-05	#01-06
AREA (m ²)	131m ²	133m ²	133m ²	176m ²

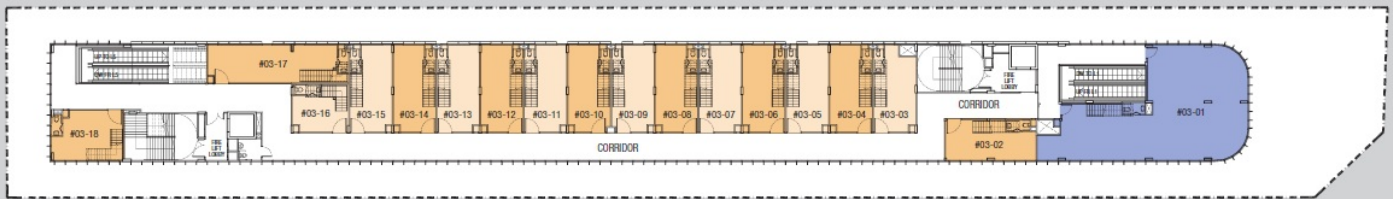
SHOPS

UNIT	#01-01	#01-02
AREA (m ²)	119m ²	80m ²

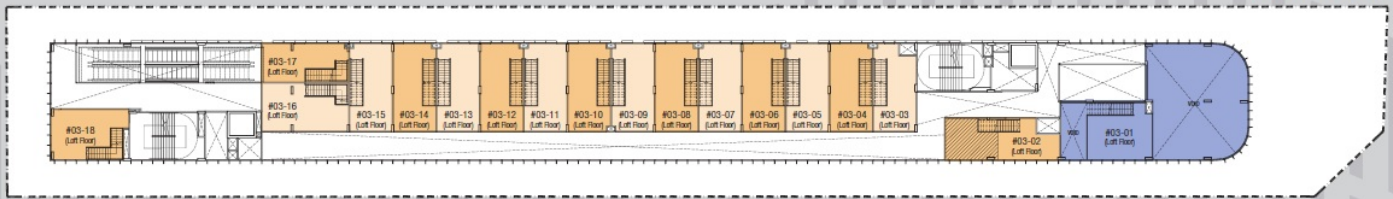


Note: Unit area includes void & air-con ledges. Air-con ledges are located on 2nd storey.
All plans are subject to amendments as approved by the relevant authorities.

3rd storey



4th storey (loft floor)



RESTAURANTS / F&B

UNIT	#03-01
AREA (m ²)	297m ²


SHOPS

UNIT	#03-02	#03-03	#03-04	#03-05	#03-06	#03-07	#03-08	#03-09	#03-10	#03-11	#03-12	#03-13	#03-14	#03-15	#03-16	#03-17	#03-18
AREA (m ²)	78m ²	68m ²	72m ²	72m ²	72m ²	72m ²	72m ²	72m ²	72m ²	72m ²	72m ²	72m ²	72m ²	72m ²	68m ²	83m ²	71m ²

Note: Unit area includes void & air-con ledges. Air-con ledges are located on roof level. 1.8m Low headroom area. All plans are subject to amendments as approved by the relevant authorities.

7th storey



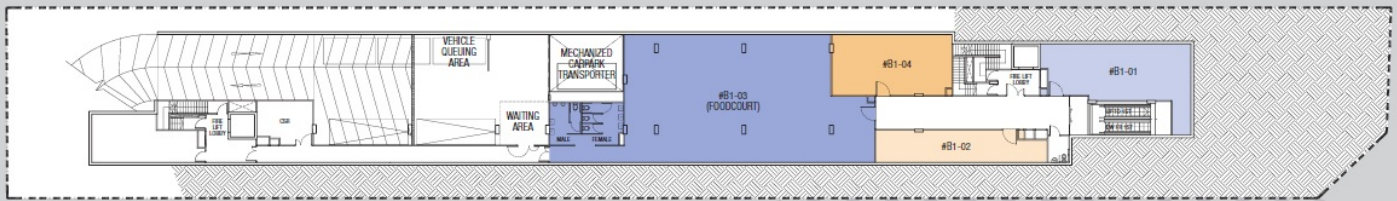
 CLINIC

UNIT	#07-01	#07-02	#07-03	#07-04	#07-05	#07-06	#07-07	#07-08	#07-09	#07-10	#07-11
AREA (m ²)	147m ²	36m ²	70m ²	71m ²	71m ²	71m ²	71m ²	71m ²	81m ²	62m ²	103m ²



Note: Unit area includes air-con ledges. Air-con ledges are located on roof level.
All plans are subject to amendments as approved by the relevant authorities.

B1 storey



RESTAURANTS / F&B

UNIT	#B1-01	#B1-03
AREA (m ²)	81m ²	297m ²

SHOPS

UNIT	#B1-02	#B1-04
AREA (m ²)	50m ²	66m ²

Note: Unit area includes air-con ledges. Air-con ledges are located on 2nd storey.
All plans are subject to amendments as approved by the relevant authorities.