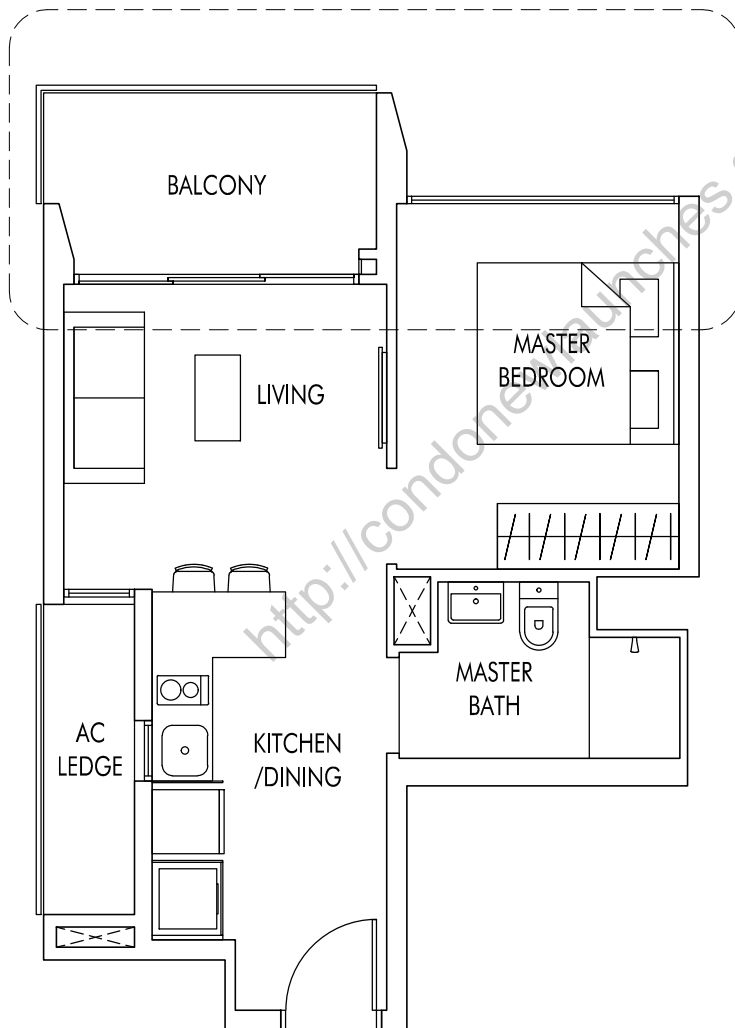
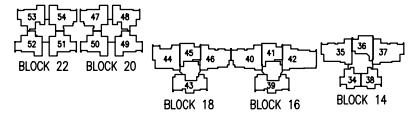
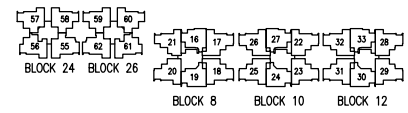
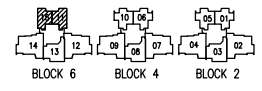


TYPE A1P

46 sq m | 495 sq ft
 (including PES of 6 sq m / 65 sq ft)

#01-11 (mirror)
 #01-15

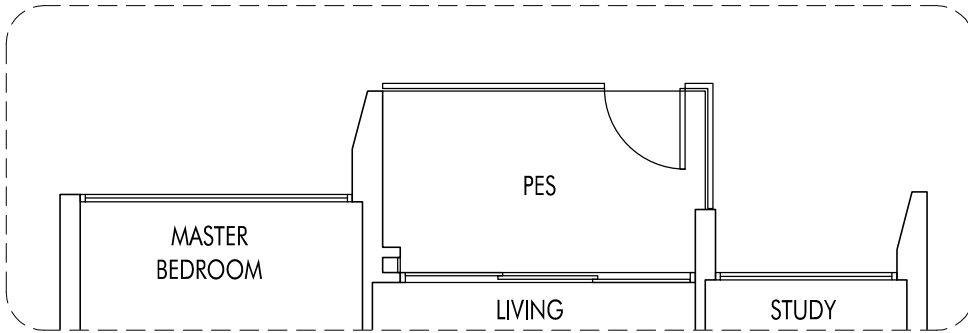


TYPE A1

46 sq m | 495 sq ft

#02-11 to #25-11 (mirror)
 #02-15 to #25-15

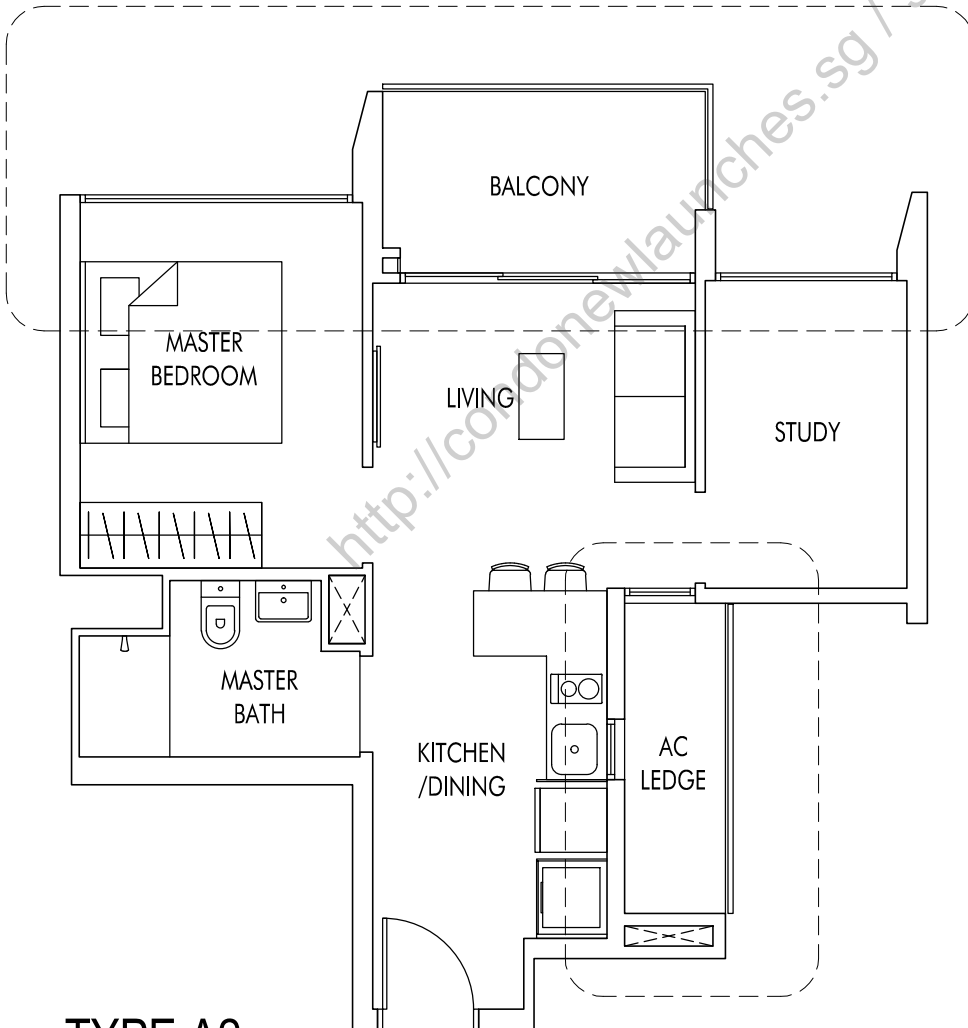
<http://condoneunites.sg> / 98345140



TYPE A2P

53 sq m | 570 sq ft
(including PES of 6 sq m / 65 sq ft)

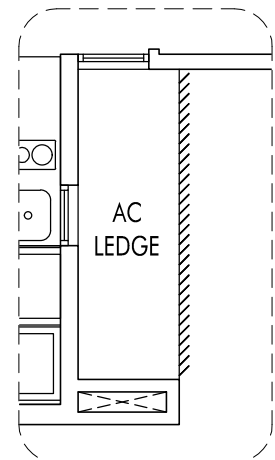
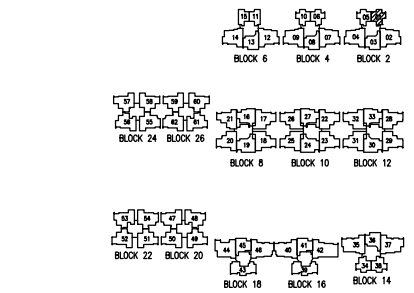
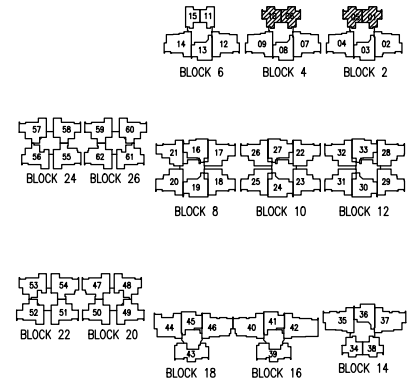
- #01-01
- #01-05 (mirror)
- #01-06
- #01-10 (mirror)



TYPE A2

53 sq m | 570 sq ft

- #02-01 to #23-01
- #02-05 to #24-05 (mirror)
- #02-06 to #25-06
- #02-10 to #25-10 (mirror)

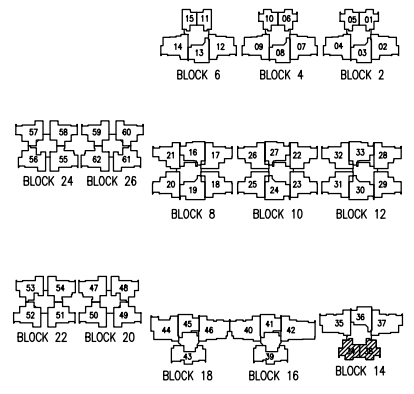
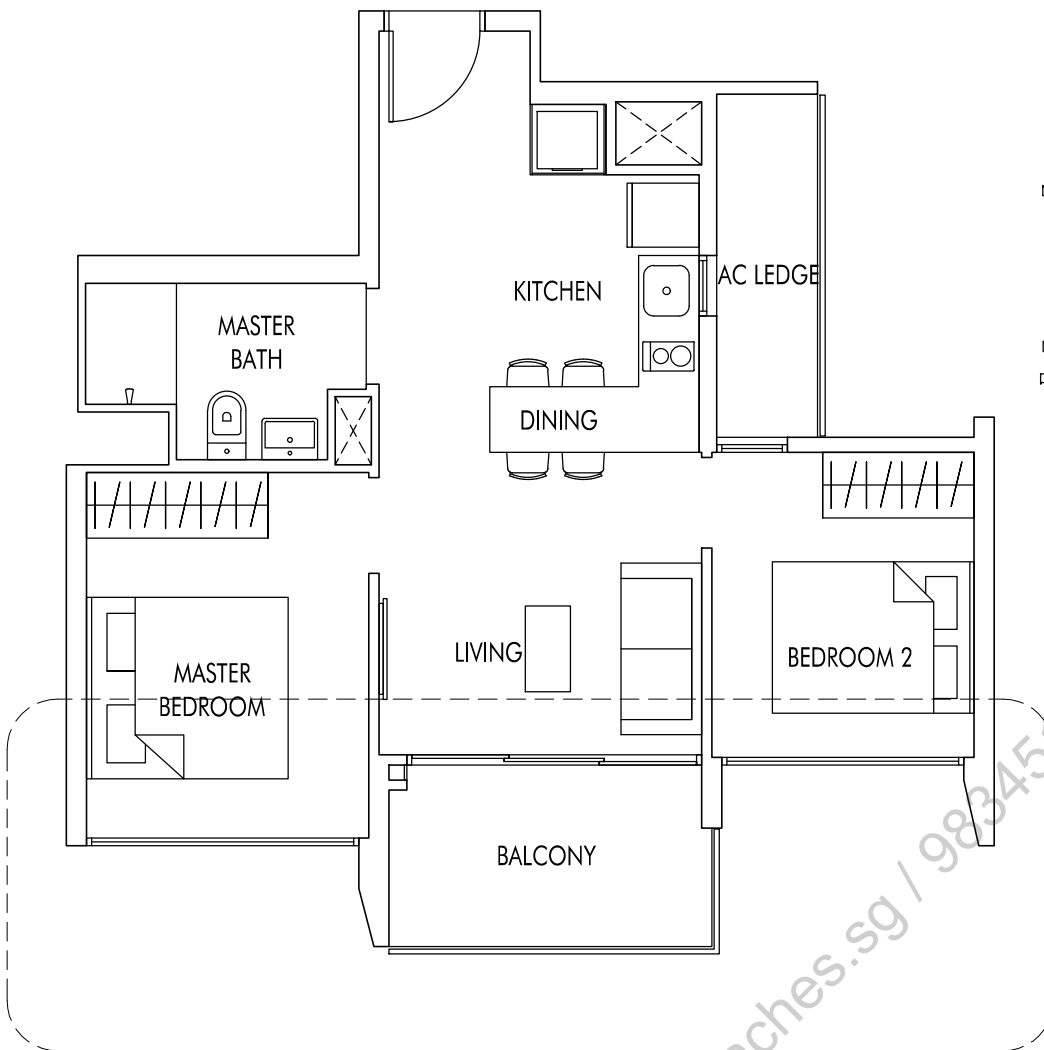


TYPE A2a

WITH VERTICAL LOUVERS
AS PER DSTA REQUIREMENT

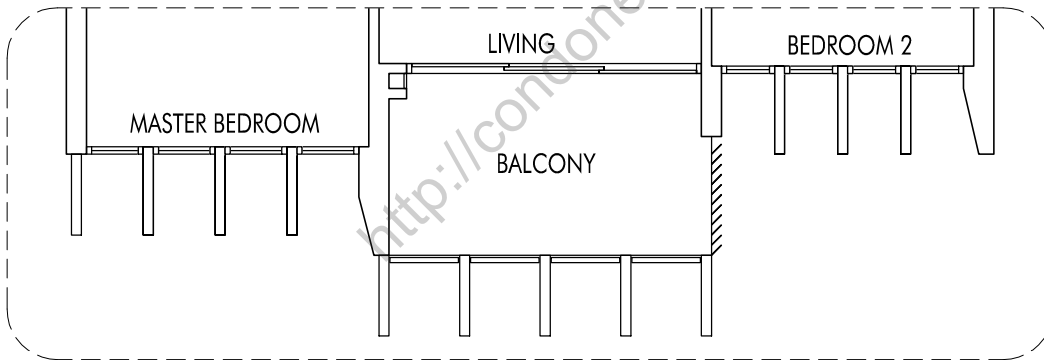
53 sq m | 570 sq ft

#24-01



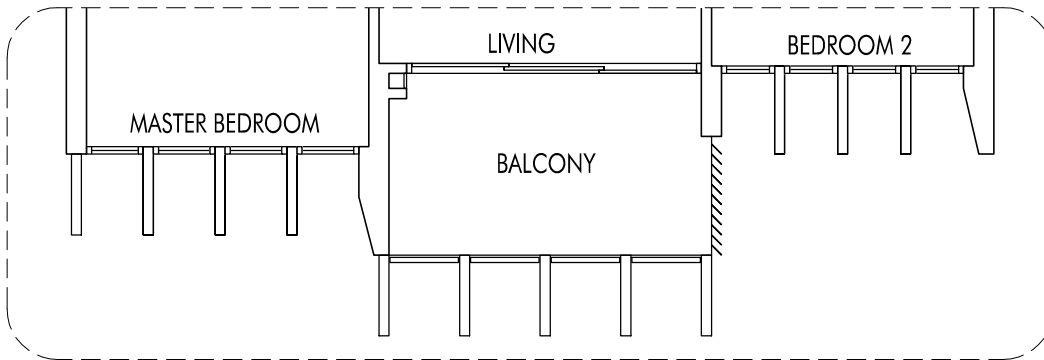
TYPE B1

57 sq m | 614 sq ft
 #02-34 TO #23-34 (mirror)
 #02-38 TO #23-38



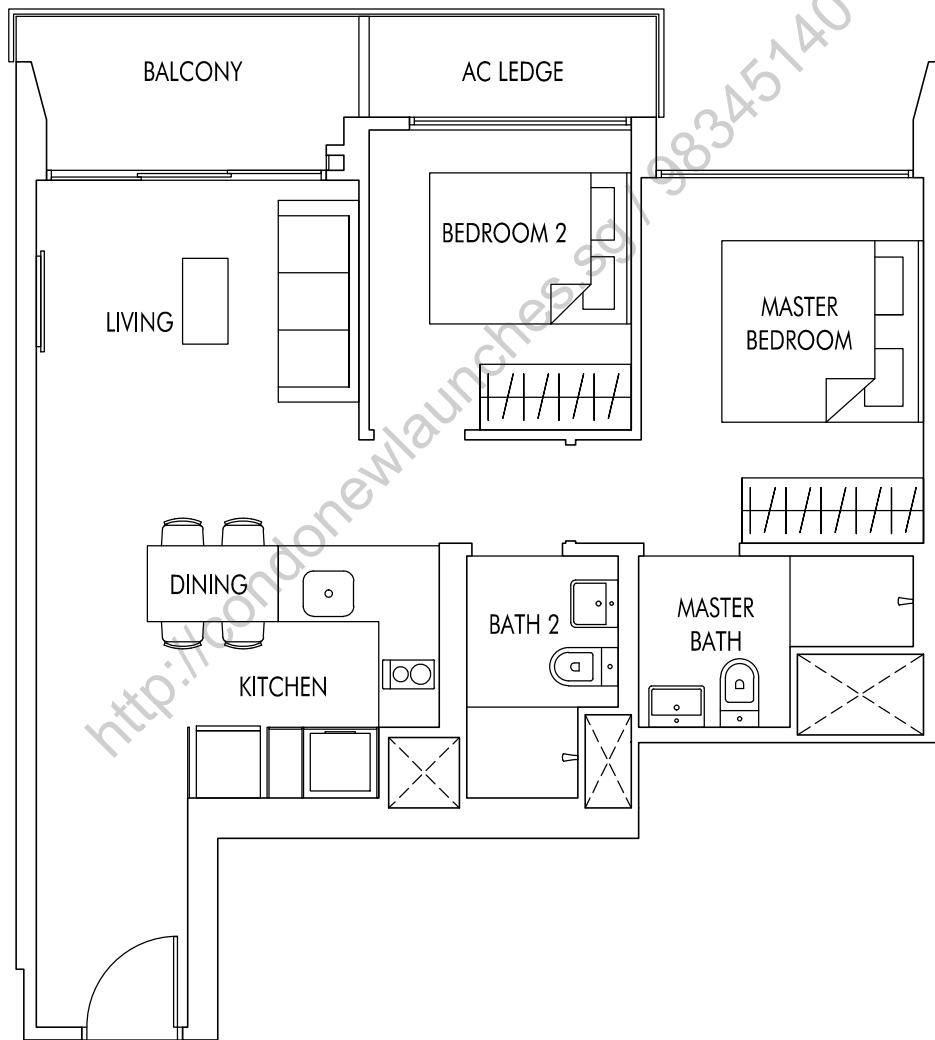
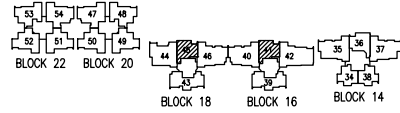
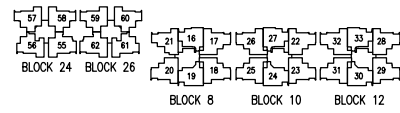
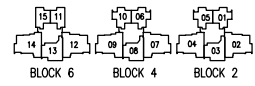
TYPE B1a

WITH VERTICAL LOUVRES & FINS
 AS PER DSTA REQUIREMENT
 57 sq m | 614 sq ft
 #24-38
 #25-38



TYPE B1b

WITH VERTICAL LOUVRES & FINS
 AS PER DSTA REQUIREMENT
 57 sq m | 614 sq ft
 #24-34 (mirror)
 #25-34 (mirror)

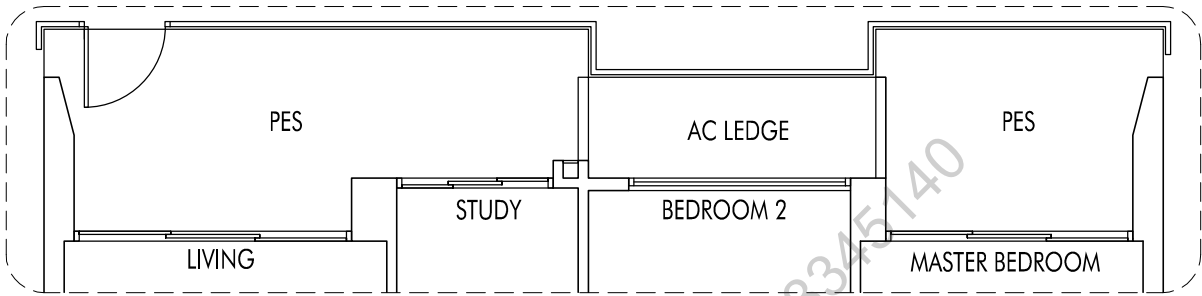
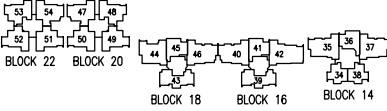
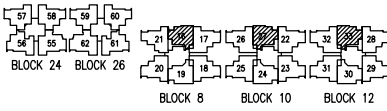
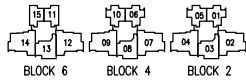


TYPE B2

66 sq m | 710 sq ft

#02-41 to #21-41

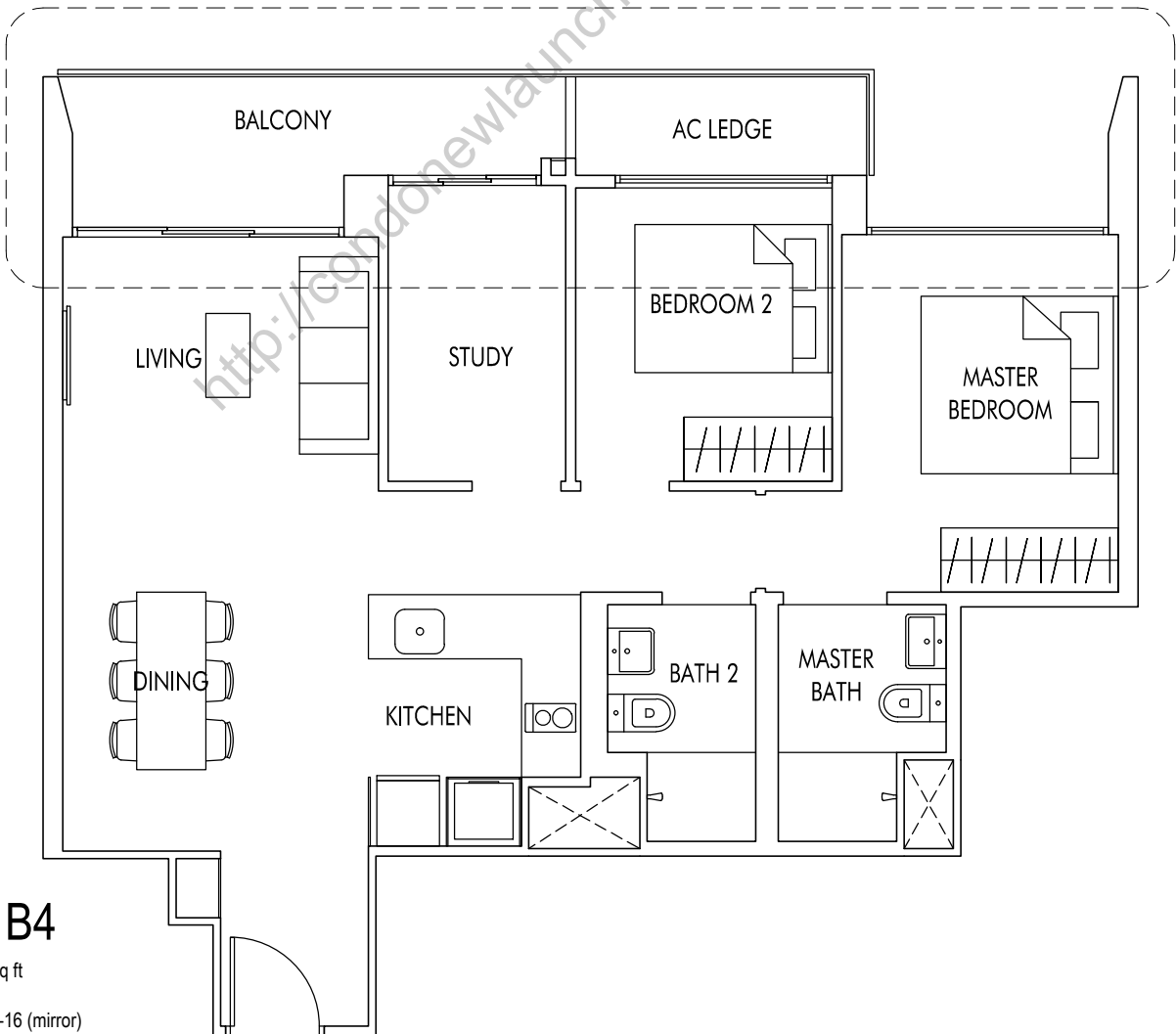
#02-45 to #21-45



TYPE B4P

87 sq m | 936 sq ft
(including PES of 15 sq m / 161 sq ft)

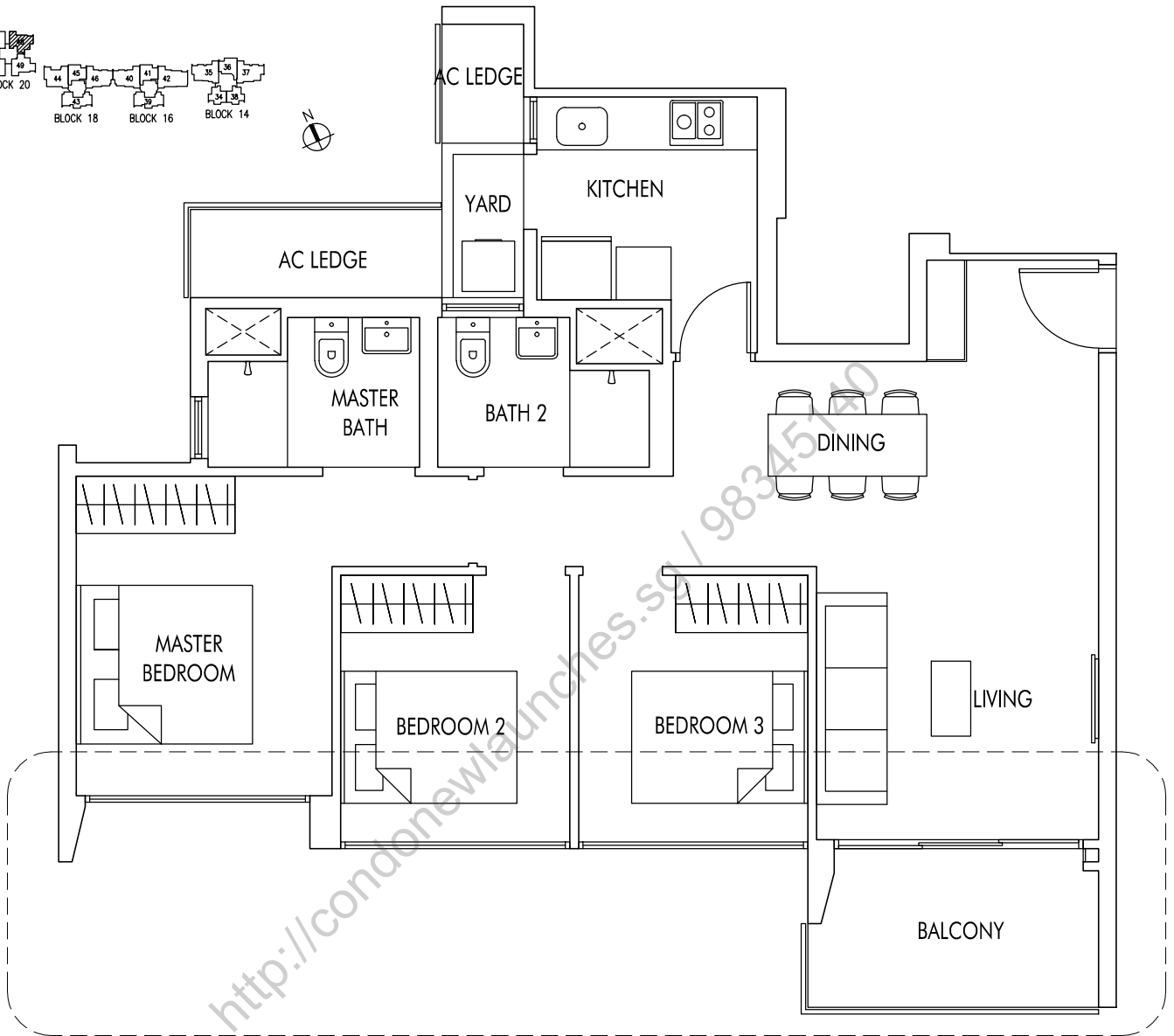
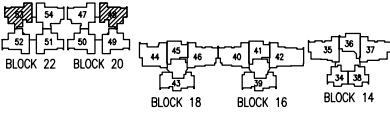
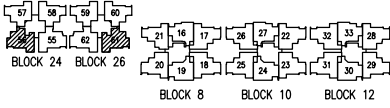
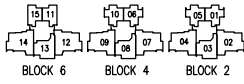
- #01-16 (mirror)
- #01-27
- #01-33



TYPE B4

79 sq m | 850 sq ft

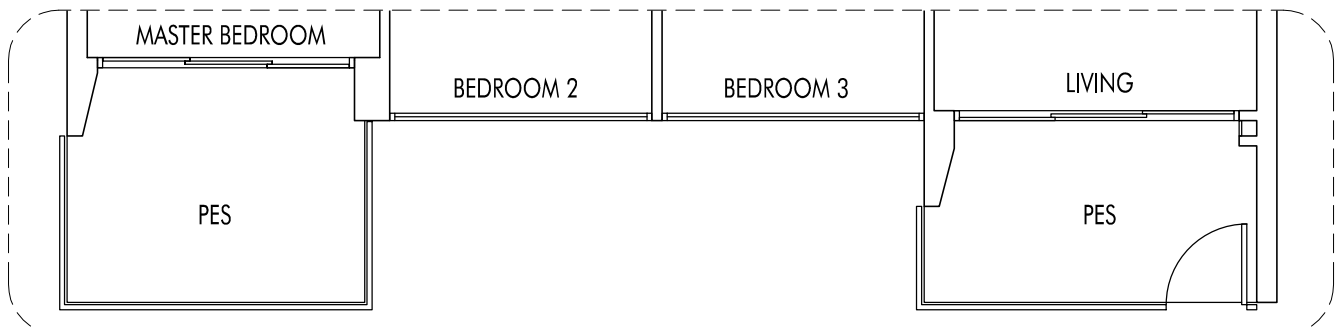
- #02-16 TO #22-16 (mirror)
- #02-27 TO #24-27
- #02-33 TO #24-33



TYPE C1

86 sq m | 926 sq ft

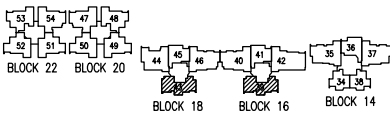
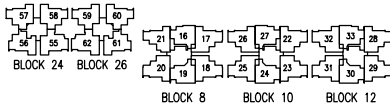
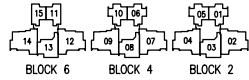
- #06-48 TO #20-48
- #06-53 TO #20-53 (mirror)
- #06-56 TO #19-56
- #06-61 TO #19-61 (mirror)



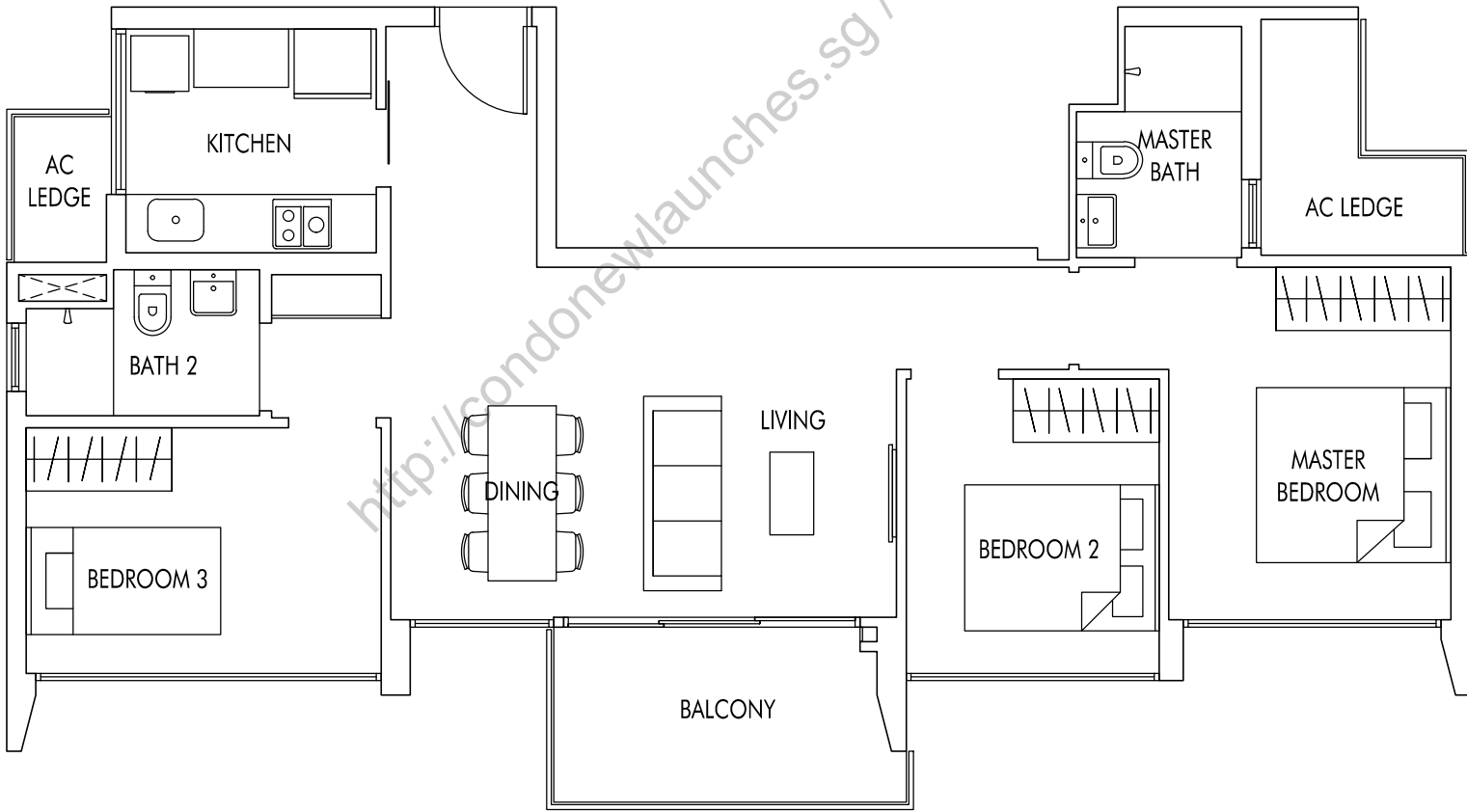
TYPE C1P

93 sq m | 1001 sq ft
(including PES of 13 sq m / 140 sq ft)

- #05-48
- #05-53 (mirror)
- #05-56
- #05-61 (mirror)



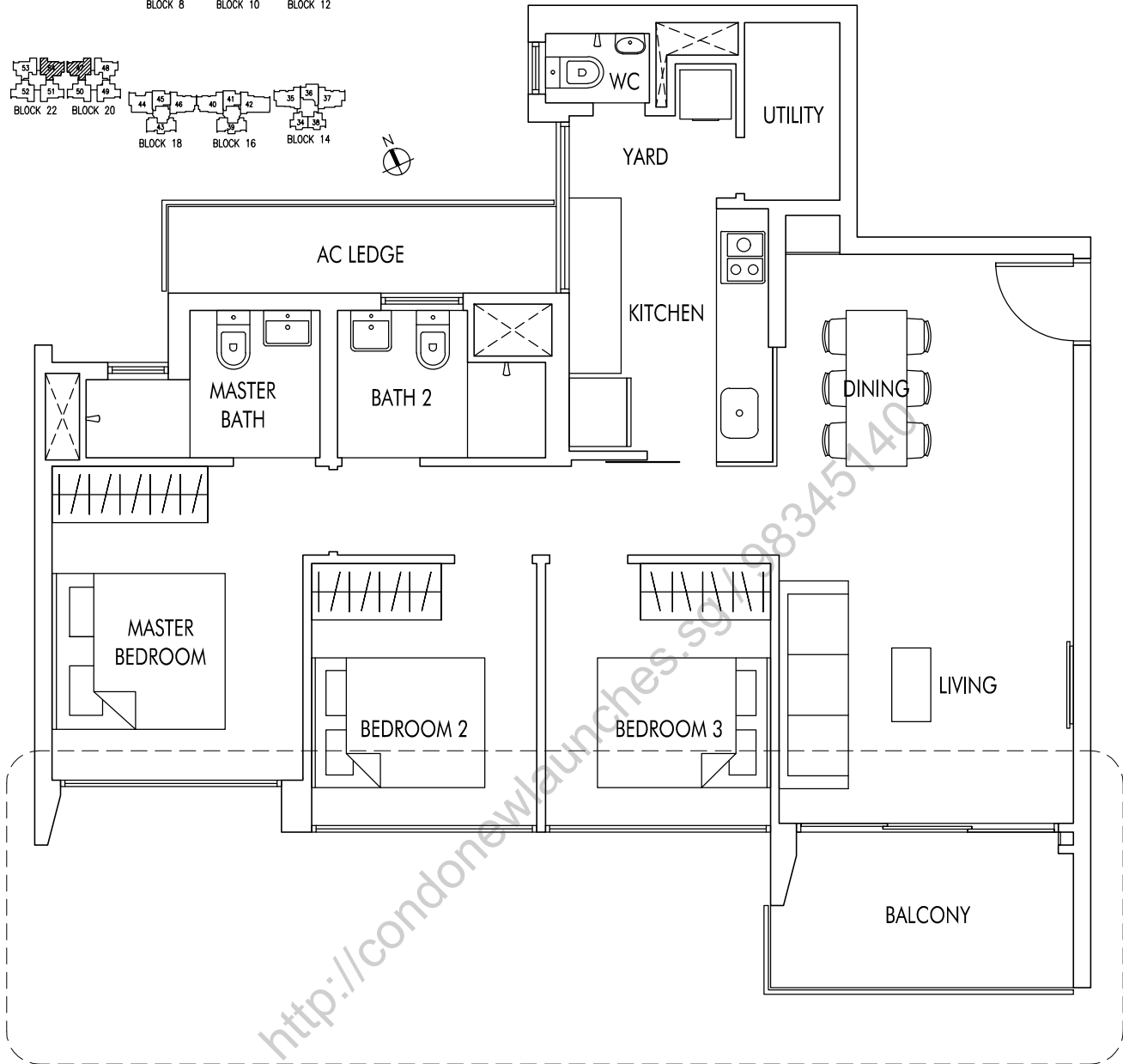
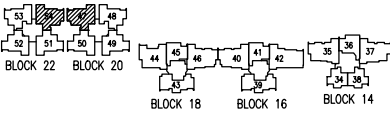
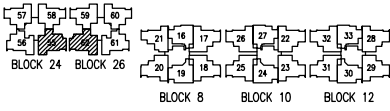
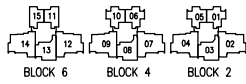
<http://condonewlaunches.sg> / 98345140



TYPE C3

86 sq m | 926 sq ft

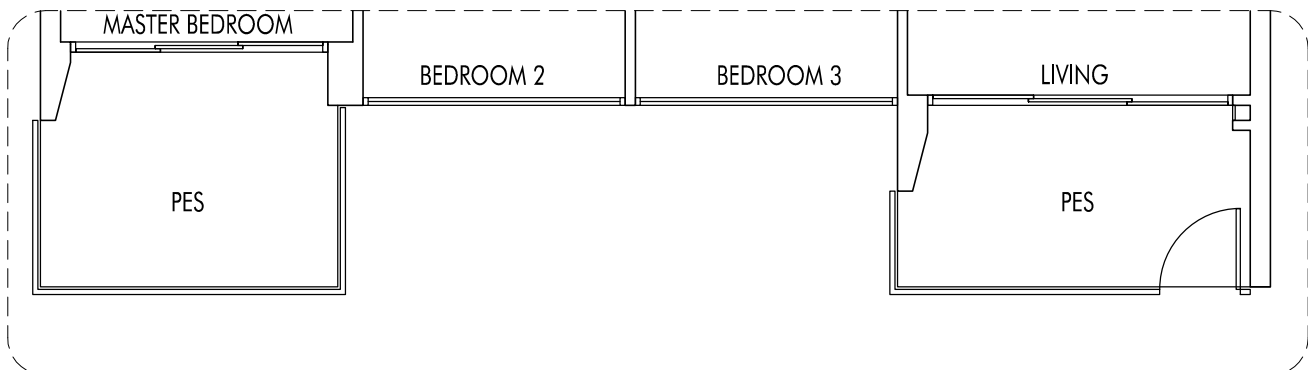
#02-39 TO #21-39
#02-43 TO #21-43



TYPE C5

93 sq m | 1001 sq ft

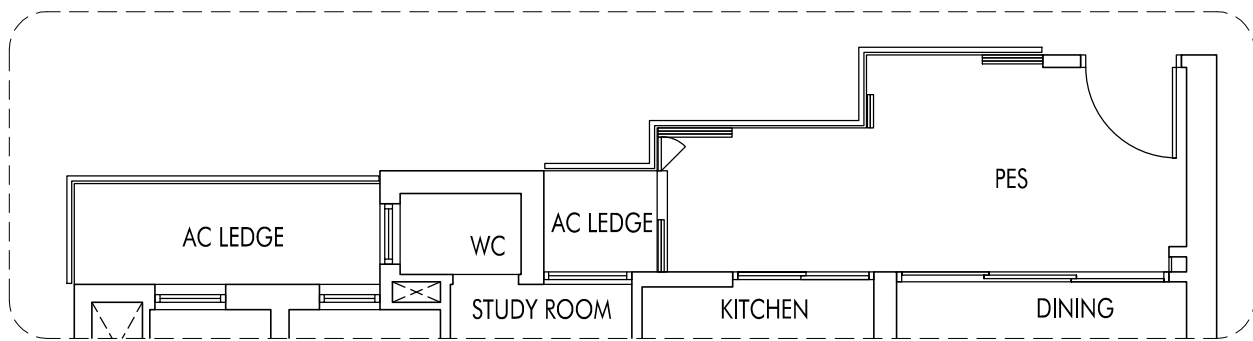
- #06-47 TO #20-47 (mirror)
- #06-54 TO #20-54
- #06-55 TO #19-55 (mirror)
- #06-62 TO #19-62



TYPE C5P

100 sq m | 1076 sq ft
(including PES of 13 sq m / 140 sq ft)

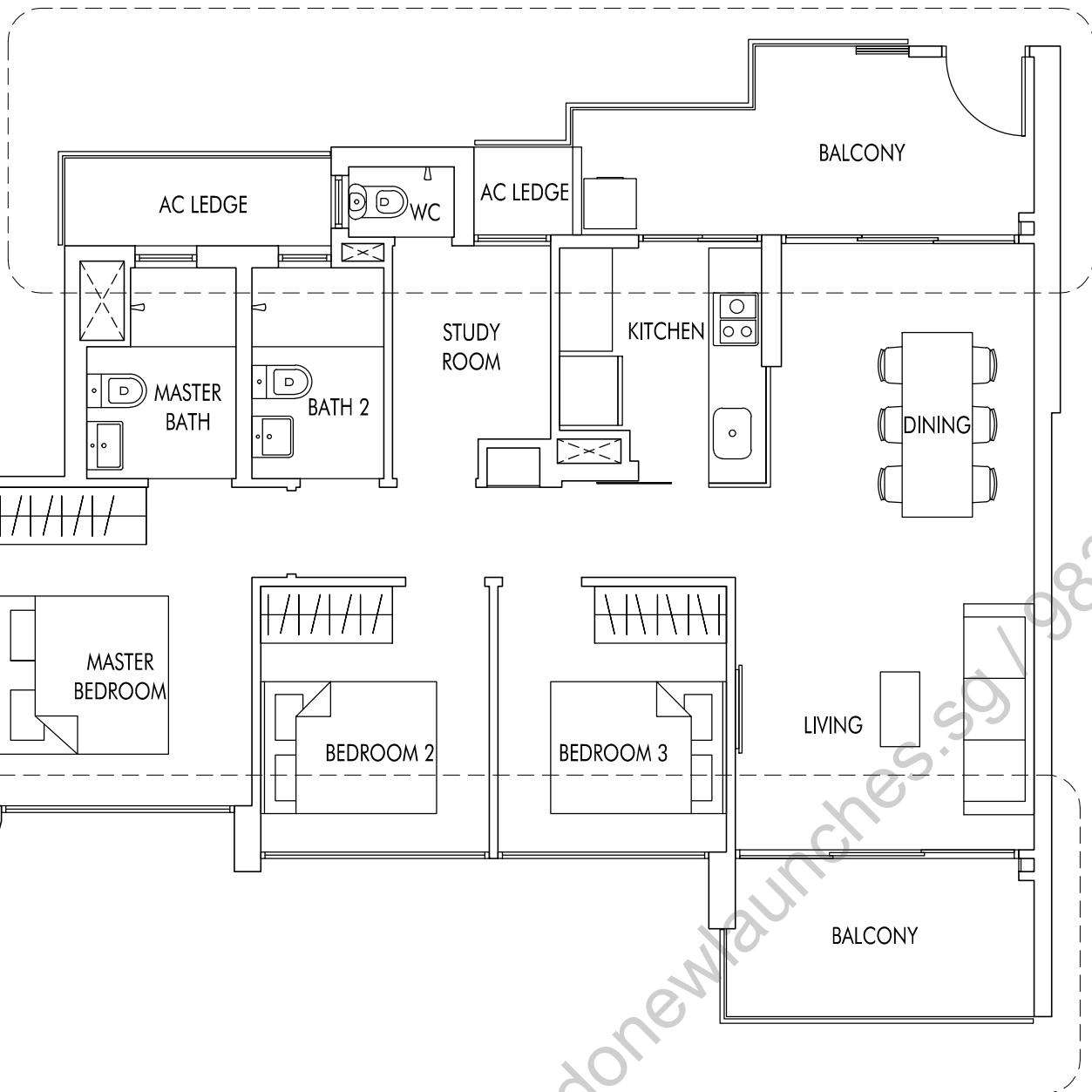
- #05-47 (mirror)
- #05-54
- #05-55 (mirror)
- #05-62



TYPE C8P

102 sq m | 1098 sq ft
(including PES of 17 sq m / 183 sq ft)

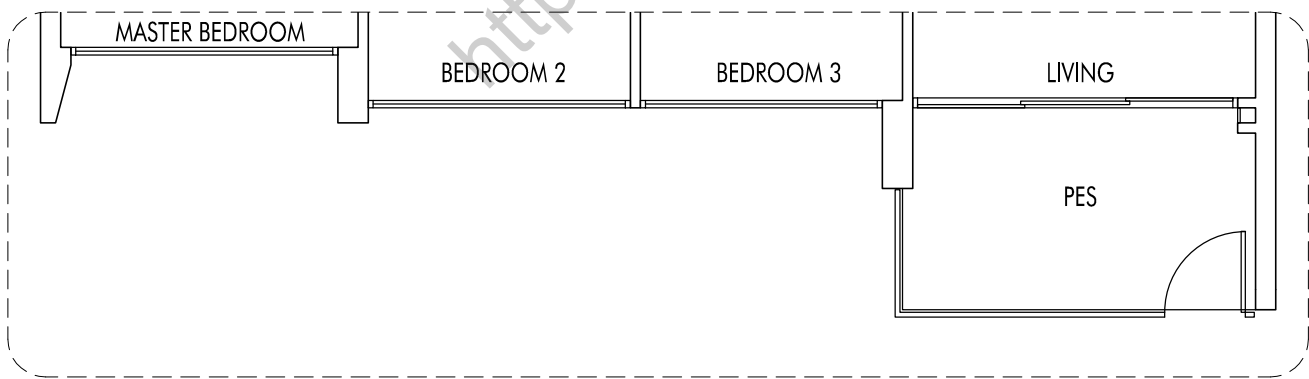
#01-04
#01-09
#01-14



TYPE C8

102 sq m | 1098 sq ft

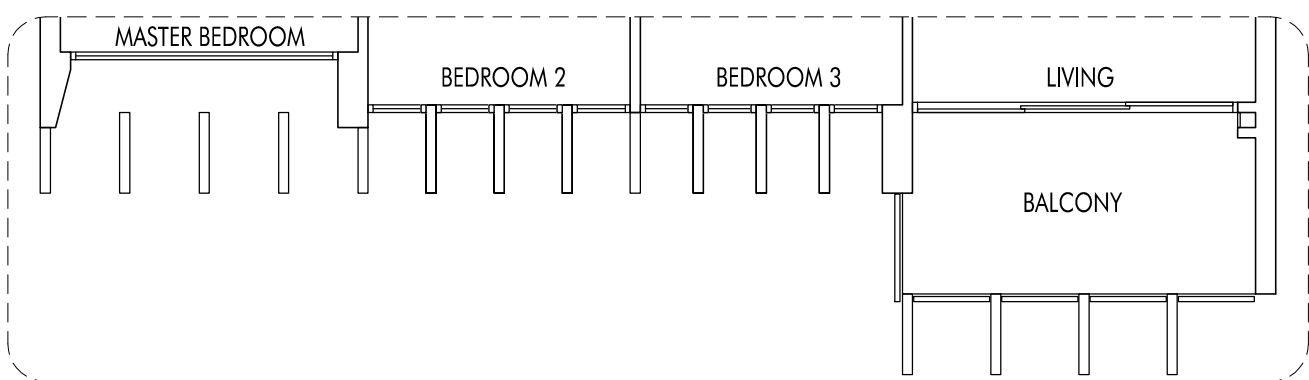
#02-04 TO #23-04
#02-09 TO #25-09
#02-14 TO #25-14



TYPE C8P

102 sq m | 1098 sq ft
(including PES of 17 sq m / 182 sq ft)

#01-04
#01-09
#01-14

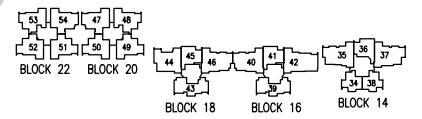
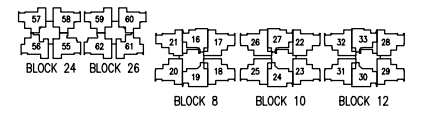
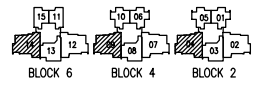


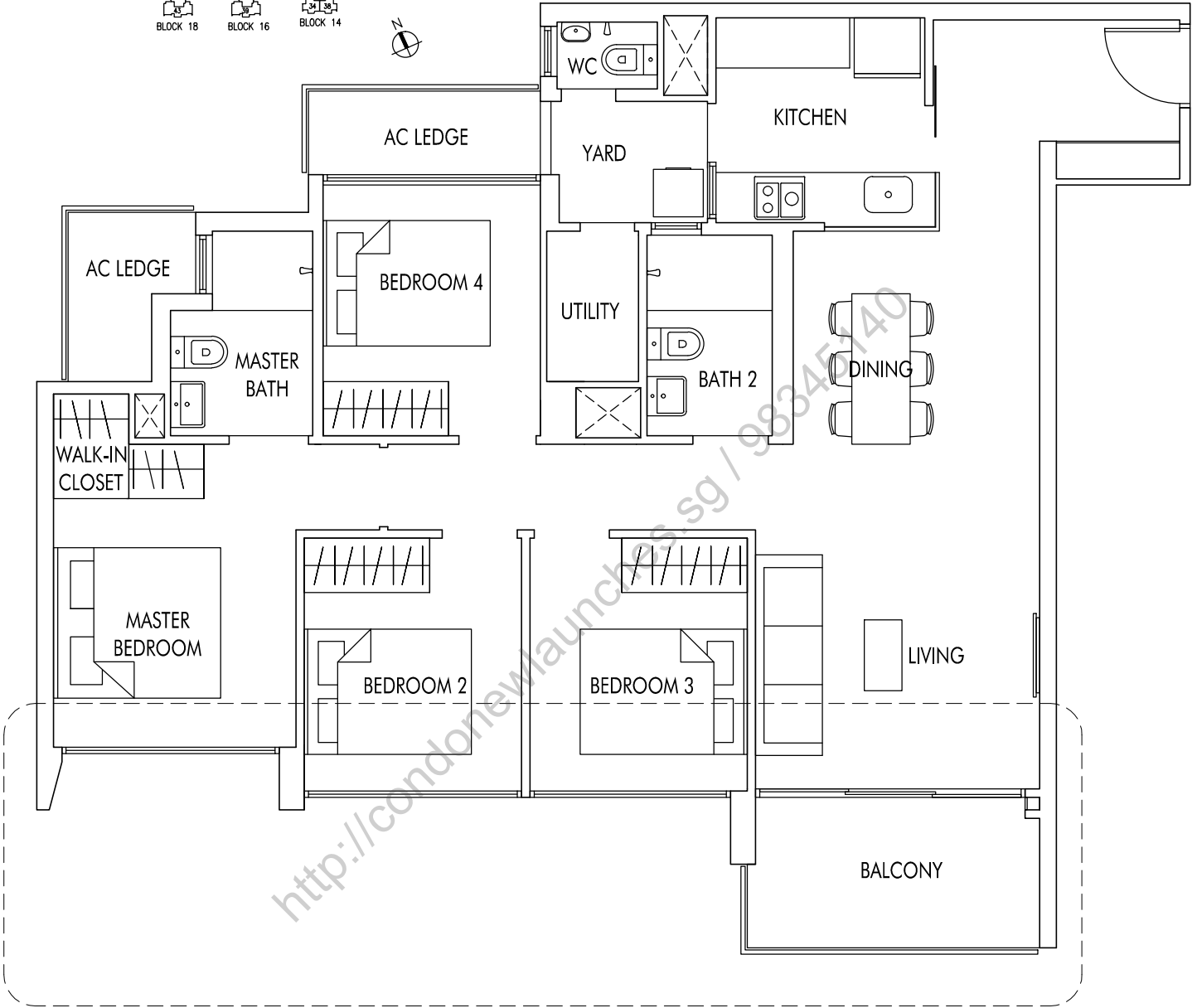
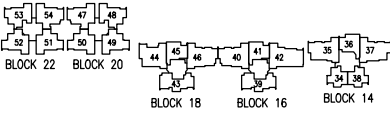
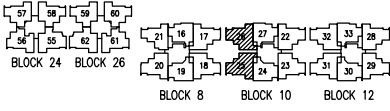
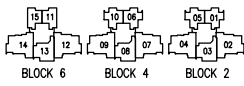
TYPE C8a

102 sq m | 1098 sq ft

WITH VERTICAL FINNS
AS PER DSTA REQUIREMENT

#24-04

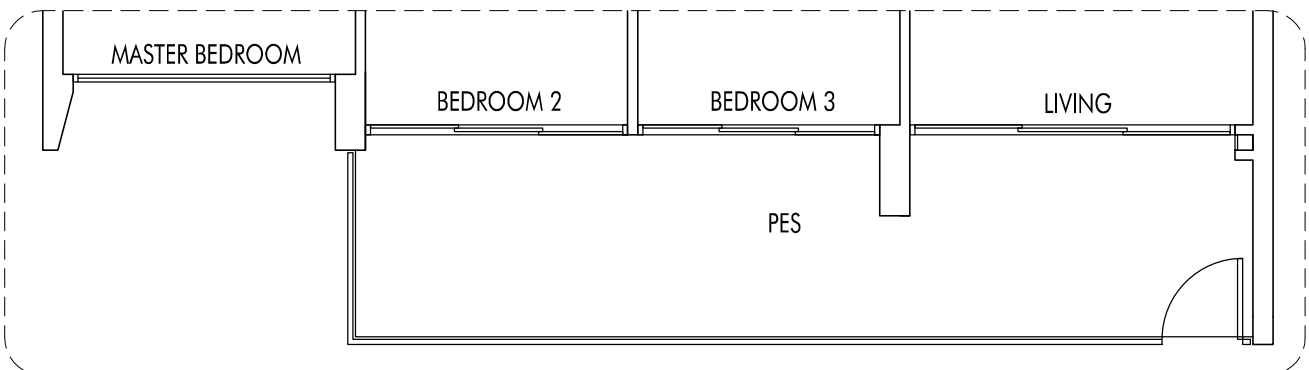




TYPE D1

108 sq m | 1163 sq ft

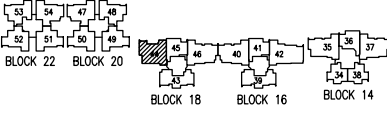
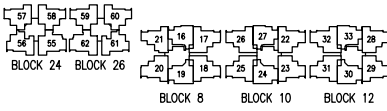
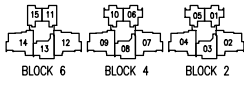
#02-25 TO #24-25
#02-26 TO #24-26 (mirror)



TYPE D1P

120 sq m | 1292 sq ft
(including PES of 18 sq m / 194 sq ft)

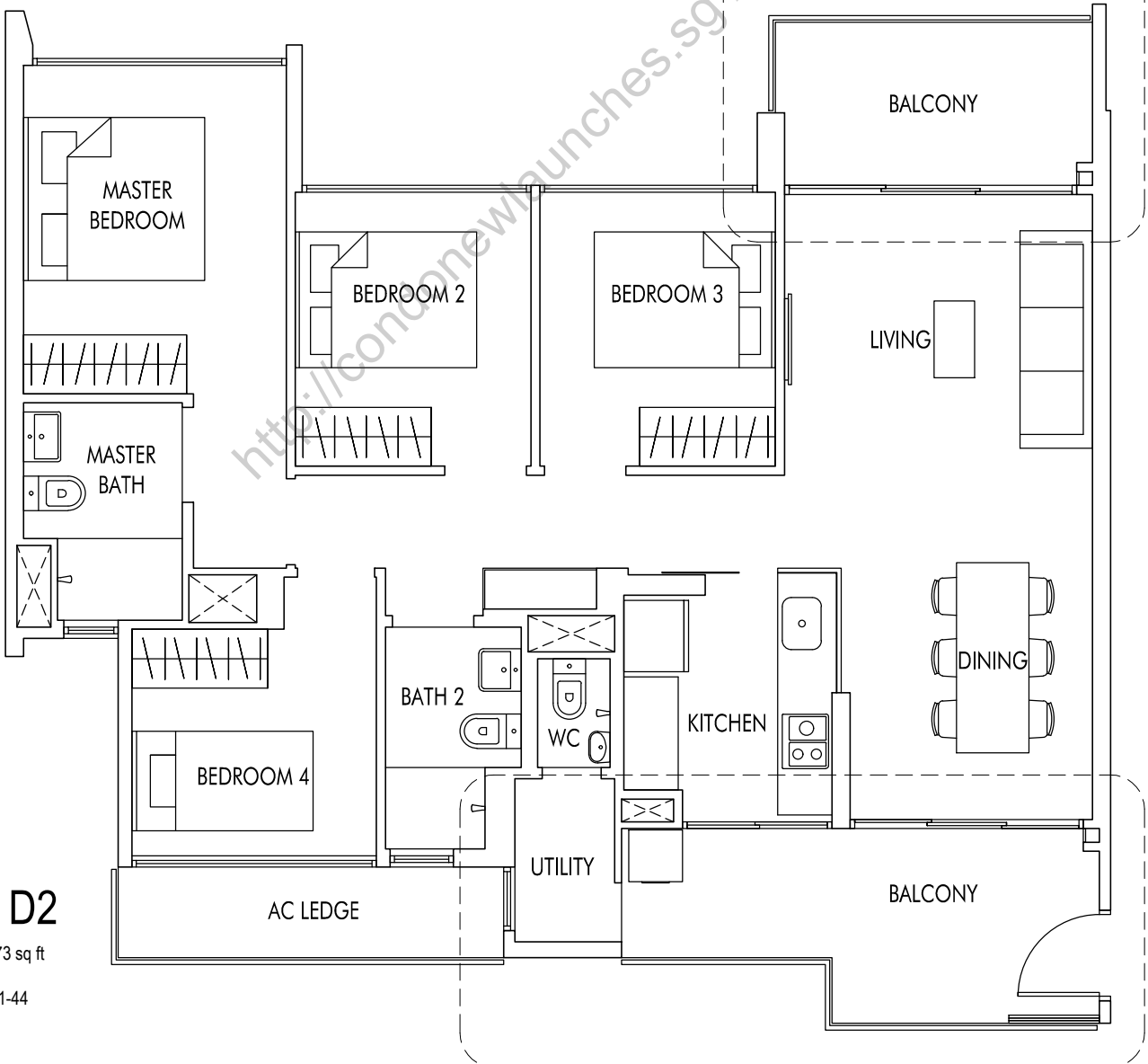
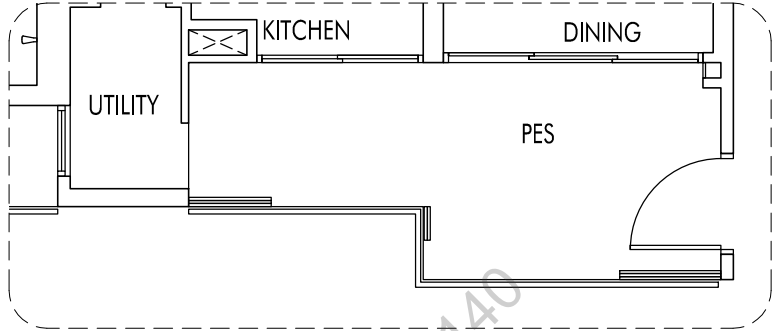
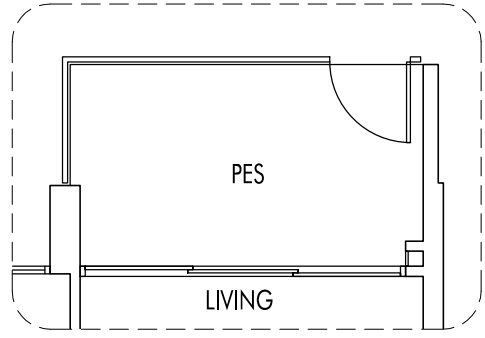
#01-25
#01-26 (mirror)



TYPE D2P

110 sq m | 1184 sq ft
(including PES of 18 sq m / 194 sq ft)

#01-44



TYPE D2

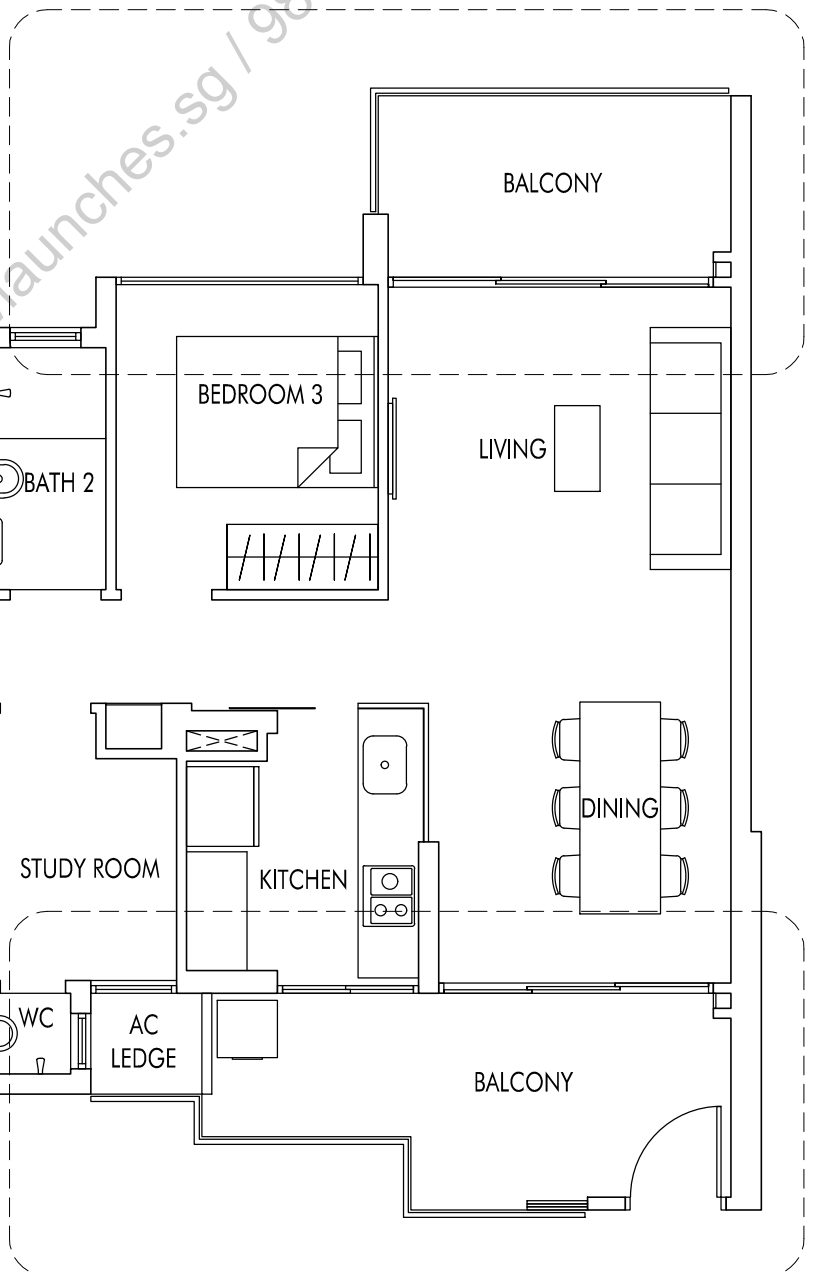
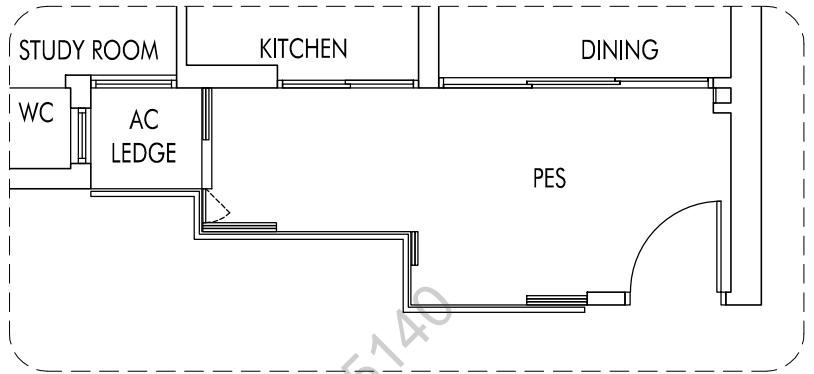
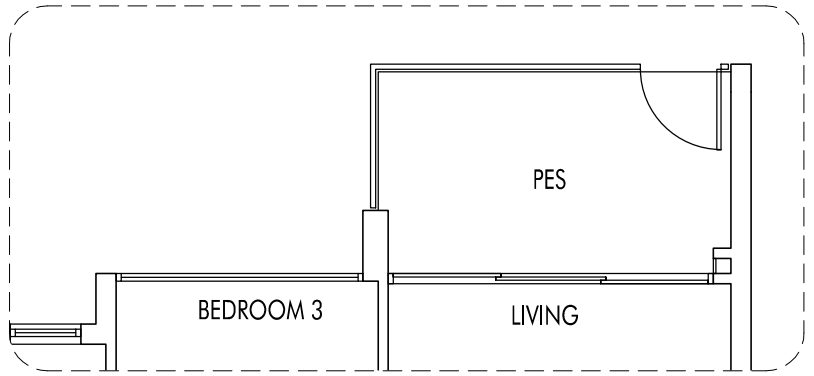
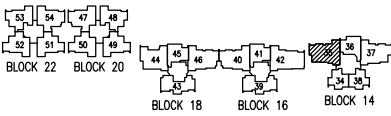
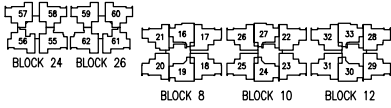
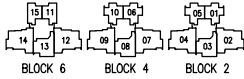
109 sq m | 1173 sq ft

#02-44 TO #21-44

TYPE D4P

114 sq m | 1227 sq ft
(including PES of 18 sq m / 194 sq ft)

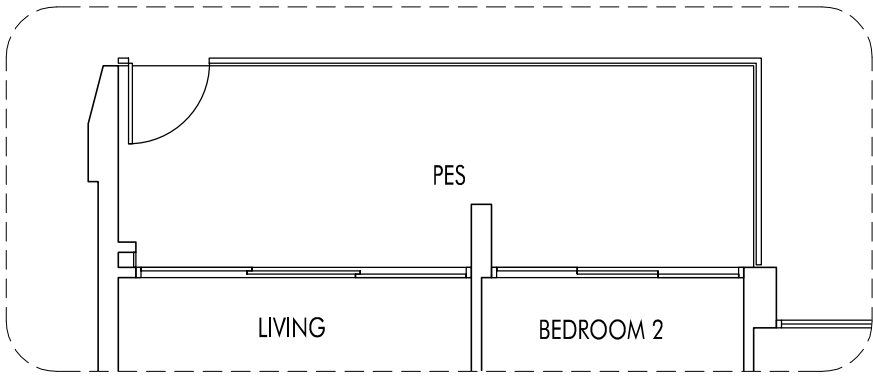
#01-35



TYPE D4

113 sq m | 1216 sq ft

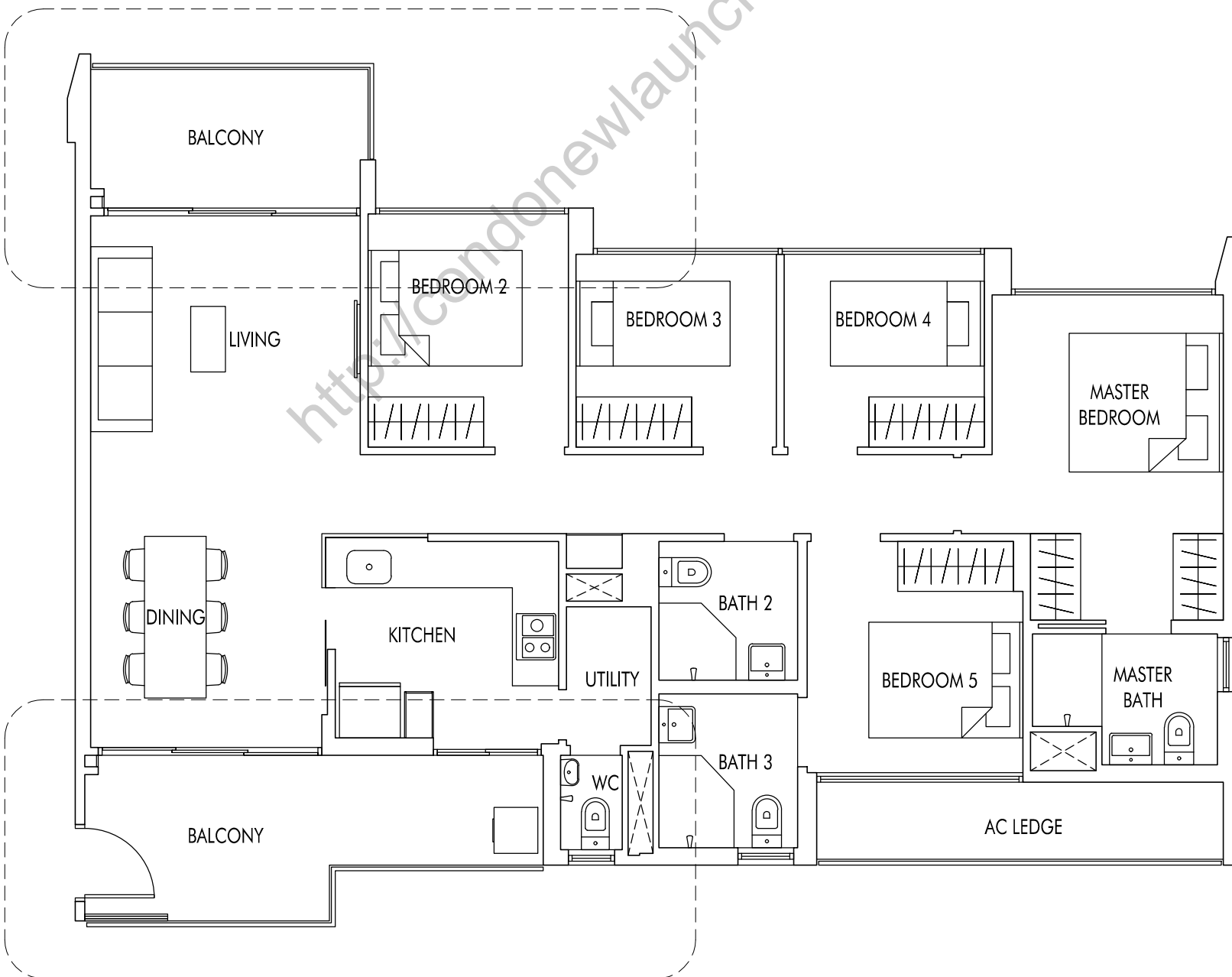
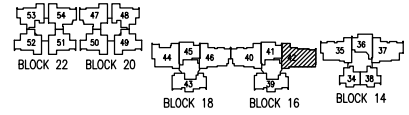
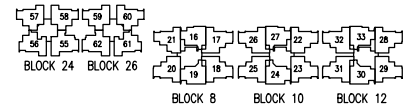
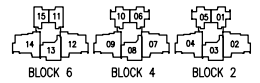
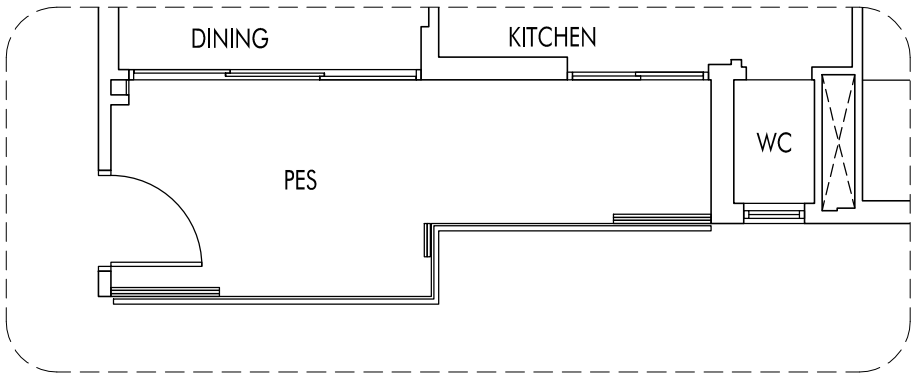
#02-35 TO #25-35



TYPE E1P

134 sq m | 1442 sq ft
(including PES of 24 sq m / 258 sq ft)

#01-42



TYPE E1

128 sq m | 1378 sq ft

#02-42 TO #21-42